

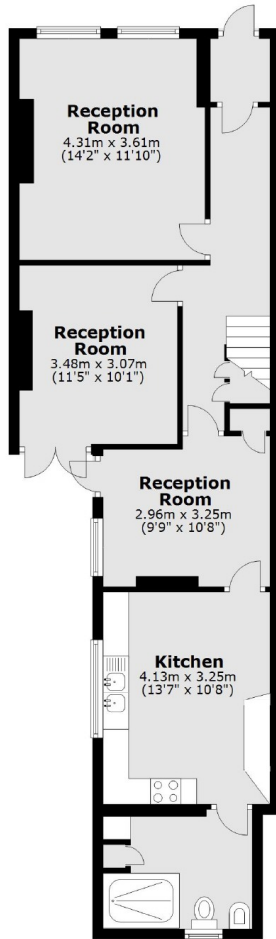
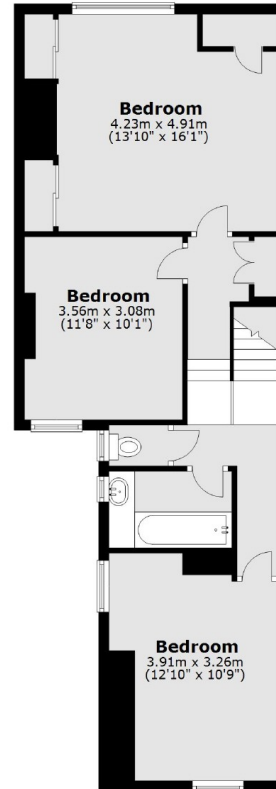


Dinsmore Road, SW12

£1,150,000

A Victorian terraced three bedroom house needing some modernisation but with many of its original features, located on the South side of Dinsmore Road.

- Victorian House
- Three Bedrooms
- Two Bathrooms
- Central Balham Location
- Needing Modernisation
- Extension Potential (STPP)

Ground Floor**First Floor**

Total area: approx. 129.9 sq. metres (1397.8 sq. feet)

Jacksons Balham
8-11 Balham Station Road
London
SW12 9SG
020 8675 6555
balham.sales@jacksonsestateagents.com

Energy Rating: D We aim to make our particulars both accurate and reliable. However they are not guaranteed; nor do they form part of an offer or contract. If you require clarification on any points then please contact us, especially if you're traveling some distance to view. Please note that appliances and heating systems have not been tested and therefore no warranties can be given as to their good working order.