



## Guildersfield Road, SW16

£1,225,000

This beautiful four bedroom mid- terraced Victorian house has been fully extended offering a beautiful reception room, a large kitchen/dining room with bi-folding doors leading onto a sensationally landscaped garden.

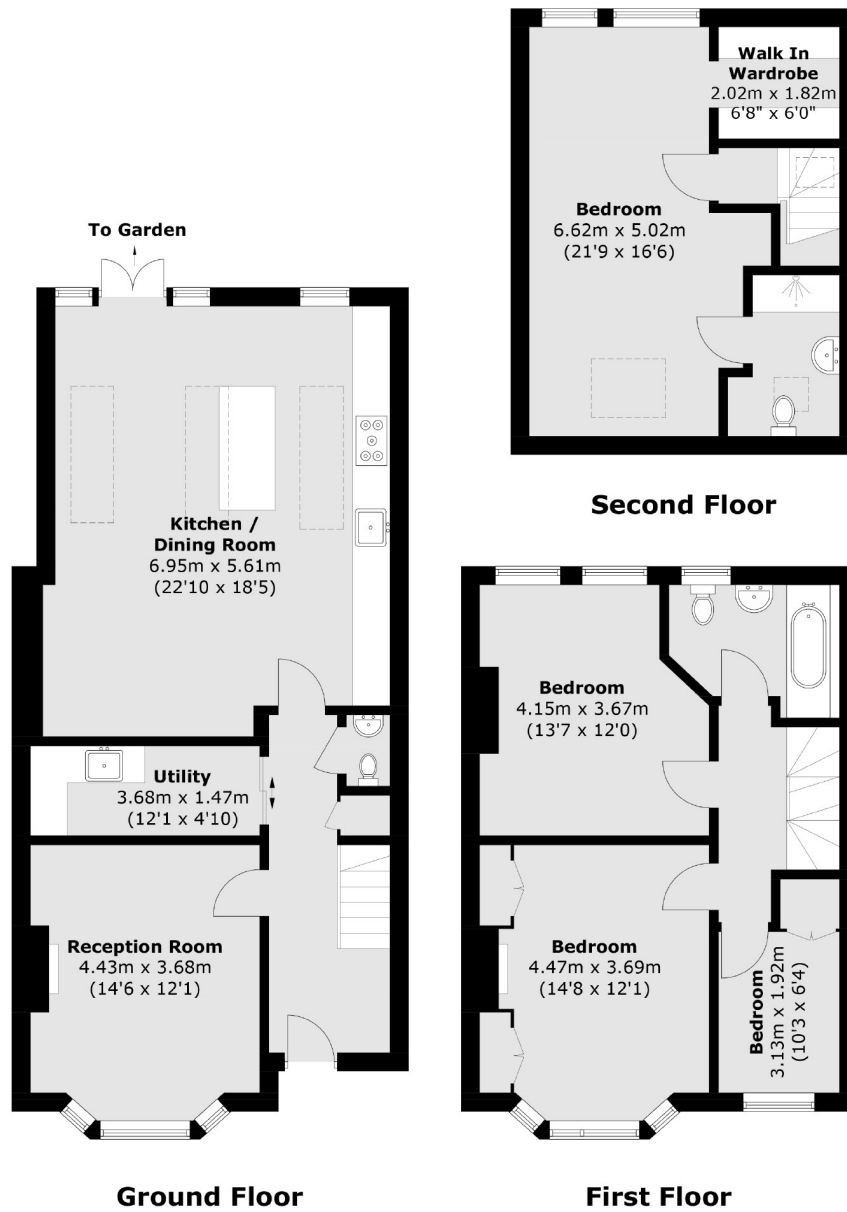
- Victorian House
- Four Bedrooms
- Lanscaped Garden
- High Specification
- Original Features
- Fully Extended



Guildersfield, a tree lined street running off Streatham common itself is located in a quiet conservation area within very close proximity of the main amenities of Streatham High Street including the Streatham hub leisure centre, restaurants, bars, café's and two large supermarkets. The property is also a short distance from the open spaces of the Rookery Gardens and Norwood Grove. Local transport includes Streatham with swift links to London Bridge and Streatham Common with links to Victoria via Clapham Junction







Total area (approx.): 152.7 sq. m (1,643.6 sq. ft)

Jacksons Streatham  
 1-3 De Montfort Parade  
 Streatham High Road  
 Streatham  
 London  
 SW16 1BU

Energy Rating: We aim to make our particulars both accurate and reliable. However they are not guaranteed; nor do they form part of an offer or contract. If you require clarification on any points then please contact us, especially if you're traveling some distance to view. Please note that appliances and heating systems have not been tested and therefore no warranties can be given as to their good working order.