



## Lewin Road, SW16

£600,000

A spacious two-bedroom ground floor flat found on Lewin Road, with an overall modern finish and with access to a private garden.

- Private Garden
- Two Bedrooms
- Ground Floor
- Two Bathrooms
- Period Conversion
- Good Location





Within walking distance of both Streatham and Streatham Common overground station and situated near many transport links to Brixton and The City of London.

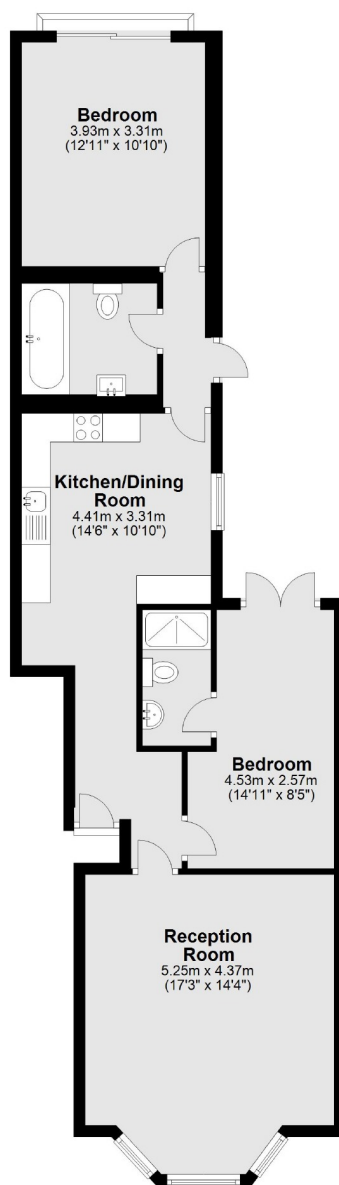
Lewin Road is a wide tree lined street in the heart of Streatham within moments of Streatham Common and the Rookery Gardens with excellent transport links in to London.







## Ground Floor



Total area: approx. 75.0 sq. metres (807.2 sq. feet)

Jacksons Streatham  
1-3 De Montfort Parade  
Streatham High Road  
Streatham  
London  
SW16 1BU

Energy Rating: We aim to make our particulars both accurate and reliable. However they are not guaranteed; nor do they form part of an offer or contract. If you require clarification on any points then please contact us, especially if you're traveling some distance to view. Please note that appliances and heating systems have not been tested and therefore no warranties can be given as to their good working order.