



Valley Road, SW16

£650,000

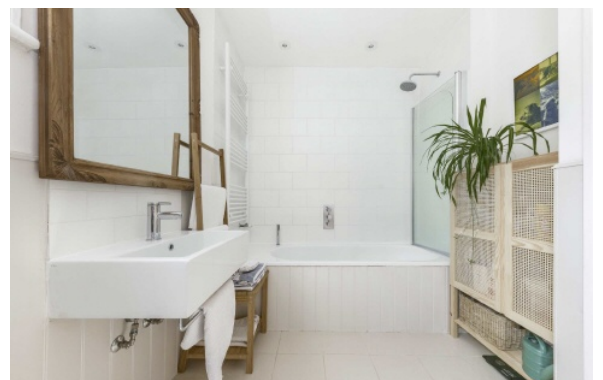
A light and spacious first floor Edwardian maisonette. This elegant home benefits from a larger than average reception, a good sized kitchen diner, a master bedroom, two further bedrooms, original features throughout, and a

- Edwardian maisonette
- Share of freehold
- Three bedrooms
- Over 110 sq.m
- Private south west facing garden
- Central Location

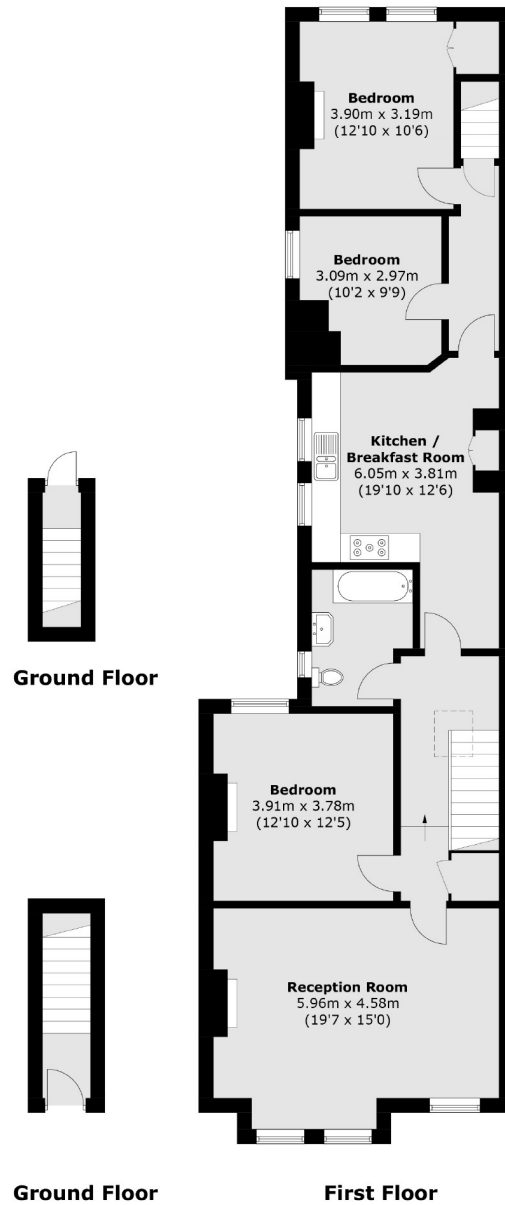


Residents in Valley Road have easy access to a number of transport links including Streatham Hill mainline station, offering quick links into Victoria, and Tulse Hill station for the Thameslink into London Bridge for the City. There are also a number of bus routes into Brixton (Victoria Line) and central London.

Close by are the vast green spaces of Streatham and Tooting Commons. There are many cafes, bars, and restaurants in nearby Streatham Hill and West Norwood, and a Picturehouse cinema. The Ofsted rated outstanding Dunraven School is also a short walk from the property.







Total area (approx.): 113.2 sq. m (1,218.3 sq. ft)

Jacksons Clapham
73 Abbeville Road
London
SW4 9JN
020 8875 7995
clapham.sales@jacksonsestateagents.com

Energy Rating: D We aim to make our particulars both accurate and reliable. However they are not guaranteed; nor do they form part of an offer or contract. If you require clarification on any points then please contact us, especially if you're traveling some distance to view. Please note that appliances and heating systems have not been tested and therefore no warranties can be given as to their good working order.