



Knollys Road, SW16

£1,025,000

A large five bed Victorian family home with development and extension potential on a popular road in between West Norwood and Streatham Hill.

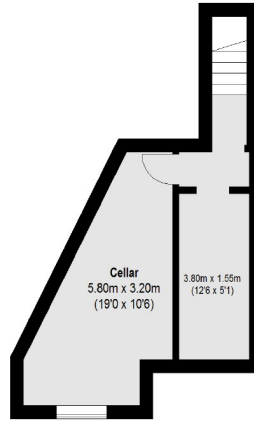
- Victorian Semi-detached House
- Five Double Bedrooms
- Two Receptions
- Large South Facing Garden
- Development Potential
- 2265sqft



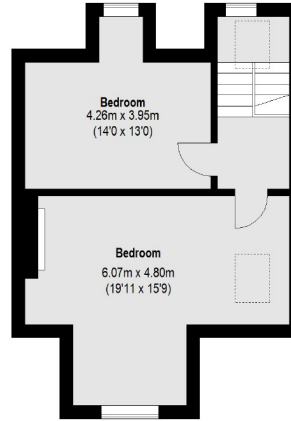
Knollys Road is well located for all the amenities of the surrounding area including many bars, independent coffee shops, restaurants, large supermarkets, leisure centre and health clubs. Streatham Hill and Tulse Hill mainline stations with links to Clapham Junction, Victoria, London Bridge and a number of other locations are also close by. The property is also conveniently situated within the catchment areas of Dunraven School and Hitherfield Primary School.



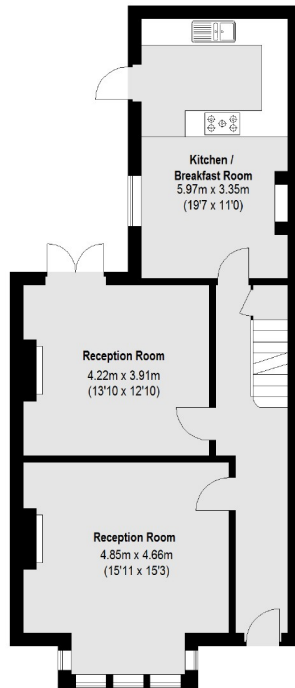




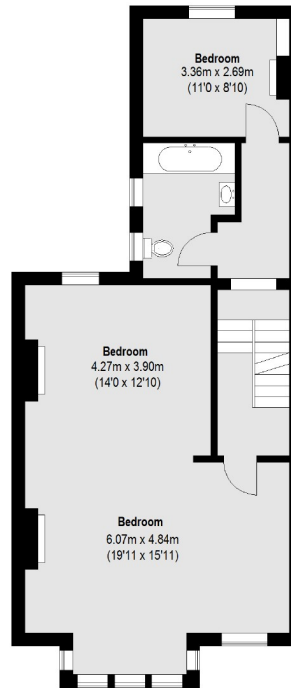
Lower Ground Floor



Second Floor



Ground Floor



First Floor

Total area (approx.): 210.45 sq. m (2265 Sq. ft)

Jacksons Streatham
1-3 De Montfort Parade
Streatham High Road
Streatham
London
SW16 1BU

Energy Rating: D We aim to make our particulars both accurate and reliable. However they are not guaranteed; nor do they form part of an offer or contract. If you require clarification on any points then please contact us, especially if you're traveling some distance to view. Please note that appliances and heating systems have not been tested and therefore no warranties can be given as to their good working order.