

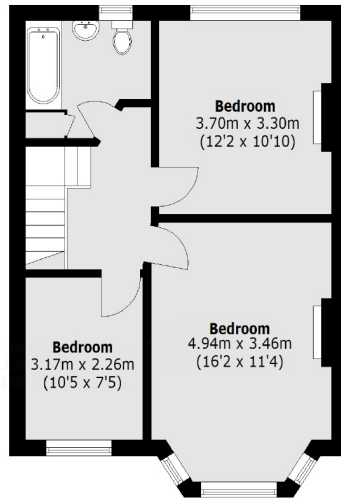
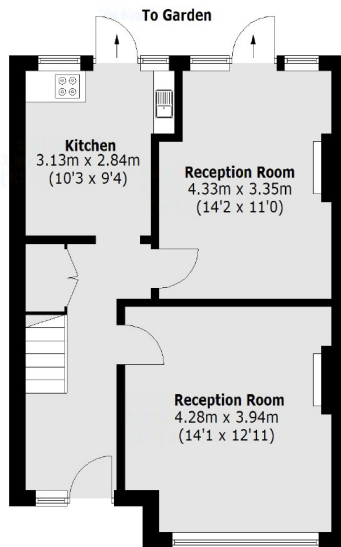


Queensville Road, SW12

£850,000

A fantastic opportunity to acquire this three bedroom Edwardian family home in need of some modernisation. Located on Queensville Road, the property features three bedrooms, two reception rooms, a family bathroom and a kitchen with direct access to a south west facing garden.

- Edwardian House
- Three Bedrooms
- Two Receptions
- South West Facing Garden
- Scope for Modernisation
- Good Transport Links

**First Floor****Ground Floor**

Total area (approx.): 98.4 sq. m (1,059.1 sq. ft)

Jacksons Balham
8-11 Balham Station Road
London
SW12 9SG
020 8675 6555
balham.sales@jacksonsstateagents.com

Energy Rating: D We aim to make our particulars both accurate and reliable. However they are not guaranteed; nor do they form part of an offer or contract. If you require clarification on any points then please contact us, especially if you're traveling some distance to view. Please note that appliances and heating systems have not been tested and therefore no warranties can be given as to their good working order.