



Drewstead Road, SW16

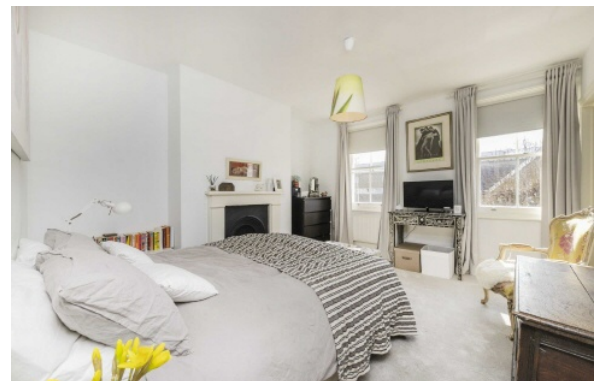
£1,500,000

An immaculately presented four/five double bedroom semi-detached family home located within touching distance of Tooting Bec Common. This spacious property benefits from a stunning double reception room on the ground floor

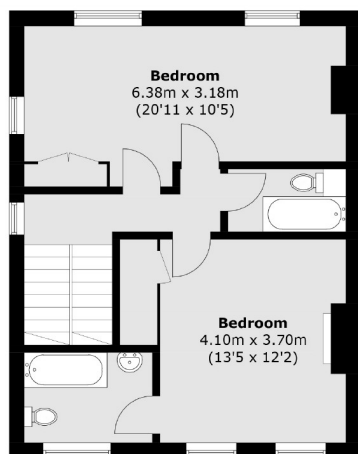
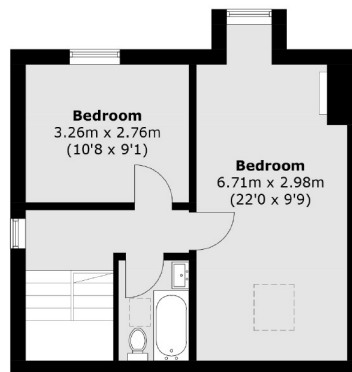
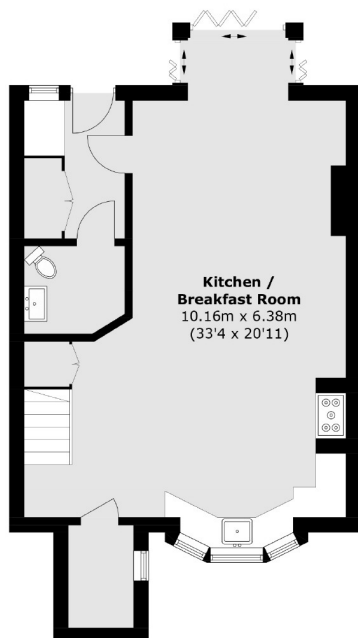
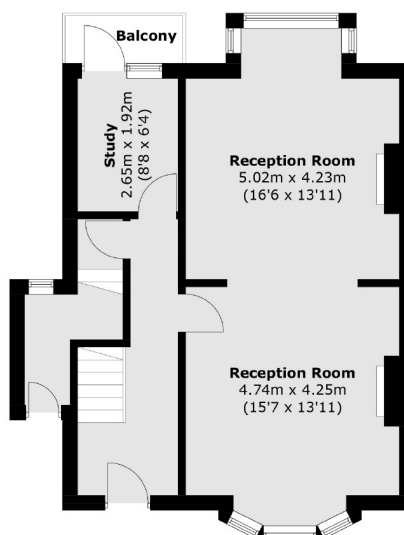
- Semi-Detached Family Home
- Four/Five Bedrooms
- Four Bathrooms
- Double Reception Room
- Close To Tooting Bec Common
- Hot Tub



Drewstead Road is well located for all the amenities in Streatham Hill and Balham including a range of independent coffee shops, bars, restaurants and a mixture of outstanding state and private schools. Tooting Bec Common is moments away from the property with Balham & Streatham Hill station nearby offering links to the City via trainline, tube or bus route.






First Floor

Second Floor

Lower Ground Floor

Ground Floor

Total area (approx.): 210.4 sq. m (2264.8 sq. ft)
Balcony area : 2.2 sq. m (23.6 sq. ft)

Jacksons Streatham
1-3 De Montfort Parade
Streatham High Road
Streatham
London
SW16 1BU

Energy Rating: D We aim to make our particulars both accurate and reliable. However they are not guaranteed; nor do they form part of an offer or contract. If you require clarification on any points then please contact us, especially if you're traveling some distance to view. Please note that appliances and heating systems have not been tested and therefore no warranties can be given as to their good working order.