



Kings Avenue, SW4

£3,950 PCM

Couples and Families Only - Set back from the road and with premium quality double glazing in place this home has been extensively modernised throughout and fully extended and comprises of; three

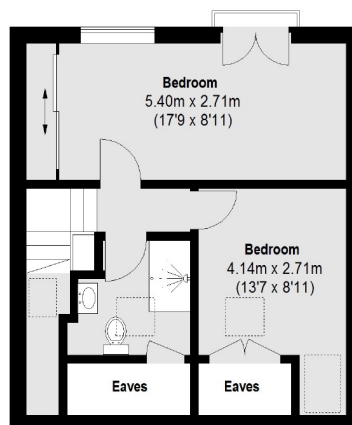
- Five Bedrooms
- Three Bathrooms
- Separate Reception
- Large Kitchen Dining Room
- Private Garden
- Off Street Parking
- Suitable for Couples or Families
- EPC Rating: C

For further information on the costs associated with renting a property, please pop into our office or visit our website.

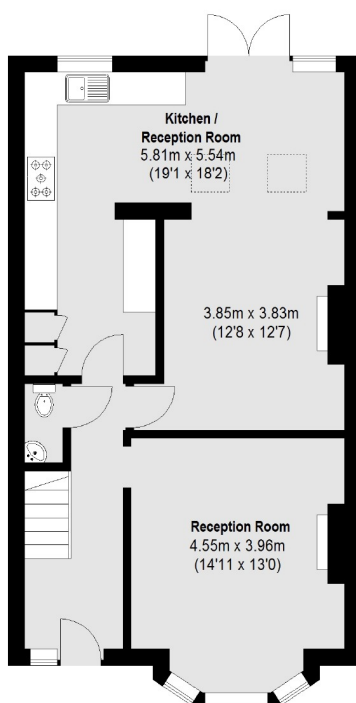


Kings Avenue is a popular residential road close to several underground stations at Clapham Common, Clapham North and Brixton plus overground stations also at Brixton and Clapham High Street. In addition Abbeville Village is close at hand plus excellent shopping facilities in Clapham and Brixton.

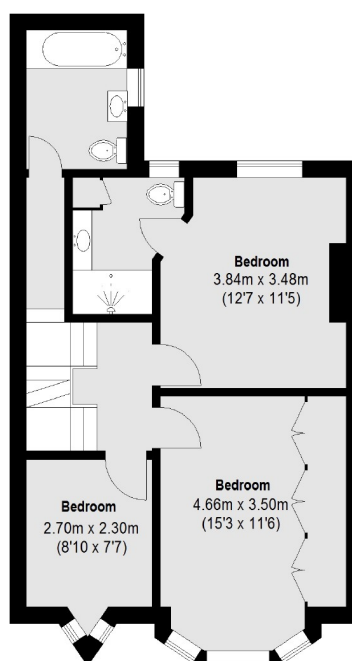




Second Floor



Ground Floor



First Floor

Total area (approx.): 151.97 sq. m (1636 Sq. ft)
(Excluding Eaves)

Jacksons Clapham
73 Abbeville Road
London
SW4 9JN
020 8875 7995
clapham.lettings@jacksonsestateagents.com

Energy Rating: C We aim to make our particulars both accurate and reliable. However they are not guaranteed; nor do they form part of an offer or contract. If you require clarification on any points then please contact us, especially if you're traveling some distance to view. Please note that appliances and heating systems have not been tested and therefore no warranties can be given as to their good working order.