



Harborough Road, SW16

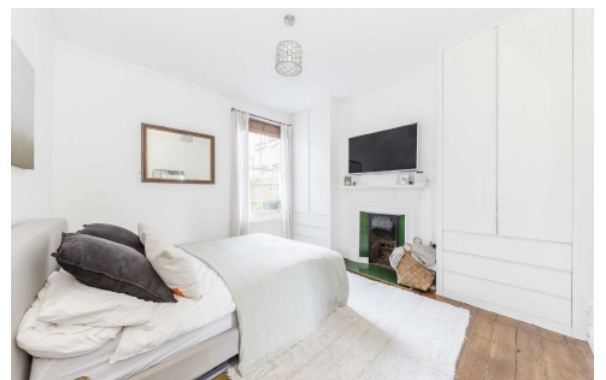
£675,000

A three double bedroom ground floor Victorian maisonette with a private garden on a highly desirable road in Streatham.

- Three Bedrooms
- Ground Floor
- Victorian Maisonette
- Private Garden
- Excellent Condition
- Desirable Location

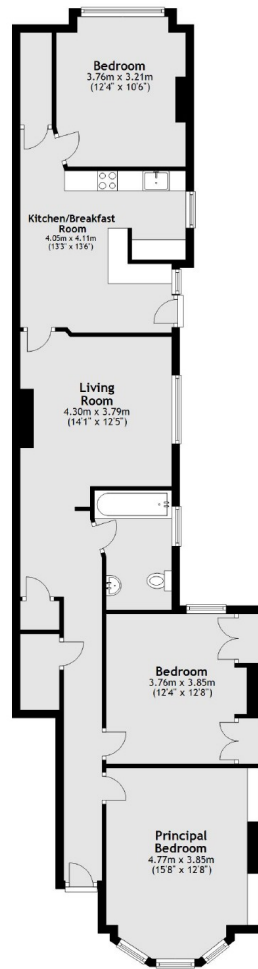


Harborough Road is widely regarded as the most desirable road in the area and benefits from being within close proximity to Sunnyhill Primary School. Further amenities include; numerous cafes, restaurants, bars and both independent and high street retailers. Frequent railway services from Streatham Hill provide easy access to Victoria via Clapham Junction and multiple bus routes leading into Brixton for the Victoria Line, whilst Streatham station offers regular services into London Bridge and Blackfriars via the Thameslink line.





Ground Floor



Total area: approx. 99.6 sq. metres (1072.5 sq. feet)

Jacksons Streatham
1-3 De Montfort Parade
Streatham High Road
Streatham
London
SW16 1BU

Energy Rating: D We aim to make our particulars both accurate and reliable. However they are not guaranteed; nor do they form part of an offer or contract. If you require clarification on any points then please contact us, especially if you're traveling some distance to view. Please note that appliances and heating systems have not been tested and therefore no warranties can be given as to their good working order.