



Franciscan Road, SW17

£1,800 PCM

A two bedroom first floor Victorian maisonette with a private roof terrace, located within close proximity of the the vast green spaces of Tooting Common.

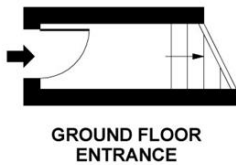
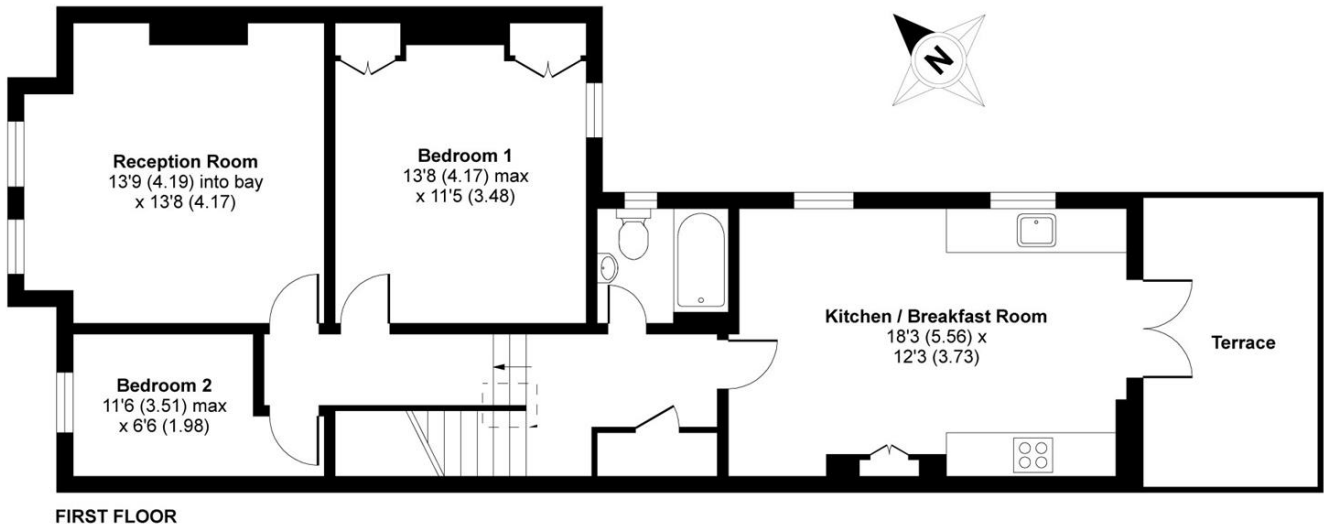
- Victorian Conversion
- Reception Room
- Large Kitchen Breakfast Room
- Two Bedrooms
- Private Roof Terrace
- Close to Station

For further information on the costs associated with renting a property, please pop into our office or visit our website.



Franciscan Road is a popular road with great transport links including access to both Tooting Bec and Balham stations.





APPROX. GROSS INTERNAL FLOOR AREA 834 SQ FT 77 SQ METRES

Franciscan Road, London, SW17

Copyright nichecom.co.uk 2013 Produced for Jacksons the Independent Estate Agents REF : 410815

Jacksons Tooting
26 Tooting Bec Road
London
SW17 8BD
020 8767 0522
tooting.lettings@jacksonsestateagents.com

Energy Rating: C We aim to make our particulars both accurate and reliable. However they are not guaranteed; nor do they form part of an offer or contract. If you require clarification on any points then please contact us, especially if you're traveling some distance to view. Please note that appliances and heating systems have not been tested and therefore no warranties can be given as to their good working order.