



Clapham Manor Street, SW4

£1,100,000

An immaculately presented three bedroom house laid out over three floors. This impressive house has a garage and is very well located just off Clapham High Street and the Old Town.

- Three bedrooms
- Kitchen dining room
- Conservatory
- Garage
- Three bedrooms and two bathrooms
- Immaculately presented



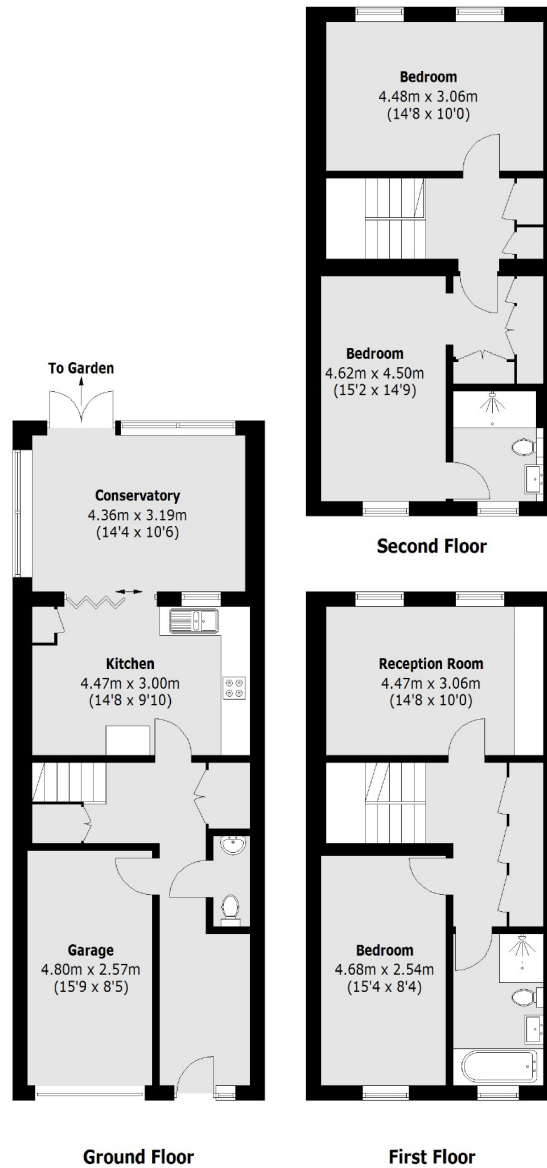
This property has a spacious, wide entrance hall with plenty of storage giving access to a separate WC and a garage. From the entrance hall you go through wide glazed doors to a kitchen dining room and then a large conservatory which offers convenient family and dining space. Access to the attractive and good sized garden is through the conservatory. There is a very nice continual ground floor flow from when you enter the house out to the garden.

The living room is on the middle floor. Also a double bedroom and family bathroom. On the top floor are two further double bedrooms (one with an en suite bathroom). Clapham Common tube and the Old Town are about 5-7 minutes walk away.

Clapham Manor Street runs off Clapham High Street near Clapham Old Town.







Total area (approx.): 147.8 sq. m (1,590.9 sq. ft)
(Including Garage)

Jacksons Balham
8-11 Balham Station Road
London
SW12 9SG
020 8675 6555
balham.sales@jacksonsestateagents.com

Energy Rating: C We aim to make our particulars both accurate and reliable. However they are not guaranteed; nor do they form part of an offer or contract. If you require clarification on any points then please contact us, especially if you're traveling some distance to view. Please note that appliances and heating systems have not been tested and therefore no warranties can be given as to their good working order.