



Buckleigh Road, SW16

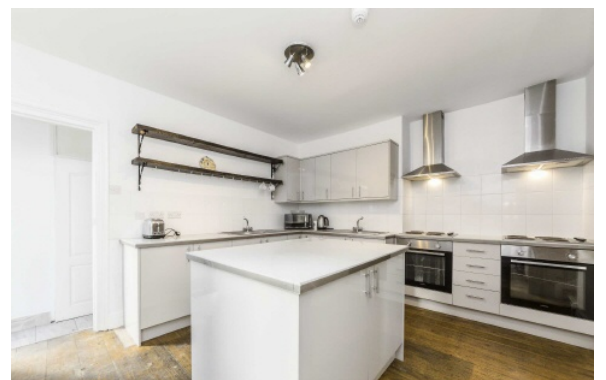
£1,425,000

A 3000 sq ft Victorian family home with a very large garden. The property is presented in fair condition and offers enormous potential to extend and improve.

- Large Garden
- Scope To Extend
- Six Bedrooms
- 3000 Sq Ft
- Period Property
- Enormous Potential



Located moments away from Streatham Common and Streatham station, this property is ideally positioned for commuters, offering quick services to the City via Southern Rail & City Thameslink lines. There are several independent pubs, cafés, restaurants and a number of outstanding schools within striking distance, as well as gyms, a leisure centre and supermarkets, including an M&S food hall.







Total area (approx.) 259.55 sq. m (2,794 sq. ft)
Balcony area (approx.) 1.96 sq. m (21 sq. ft)

Jacksons Streatham
1-3 De Montfort Parade
Streatham High Road
Streatham
London
SW16 1BU

Energy Rating: We aim to make our particulars both accurate and reliable. However they are not guaranteed; nor do they form part of an offer or contract. If you require clarification on any points then please contact us, especially if you're traveling some distance to view. Please note that appliances and heating systems have not been tested and therefore no warranties can be given as to their good working order.