



Elms Road, SW4

£600,000

A two bedroom, share of freehold, ground floor apartment with an attractive private garden situated on a premier road in Abbeville Village. The property is being sold chain free and has a private garage.

- Share of Freehold
- Private Garage
- South West facing garden
- Great Location
- Private Garden
- No forward chain

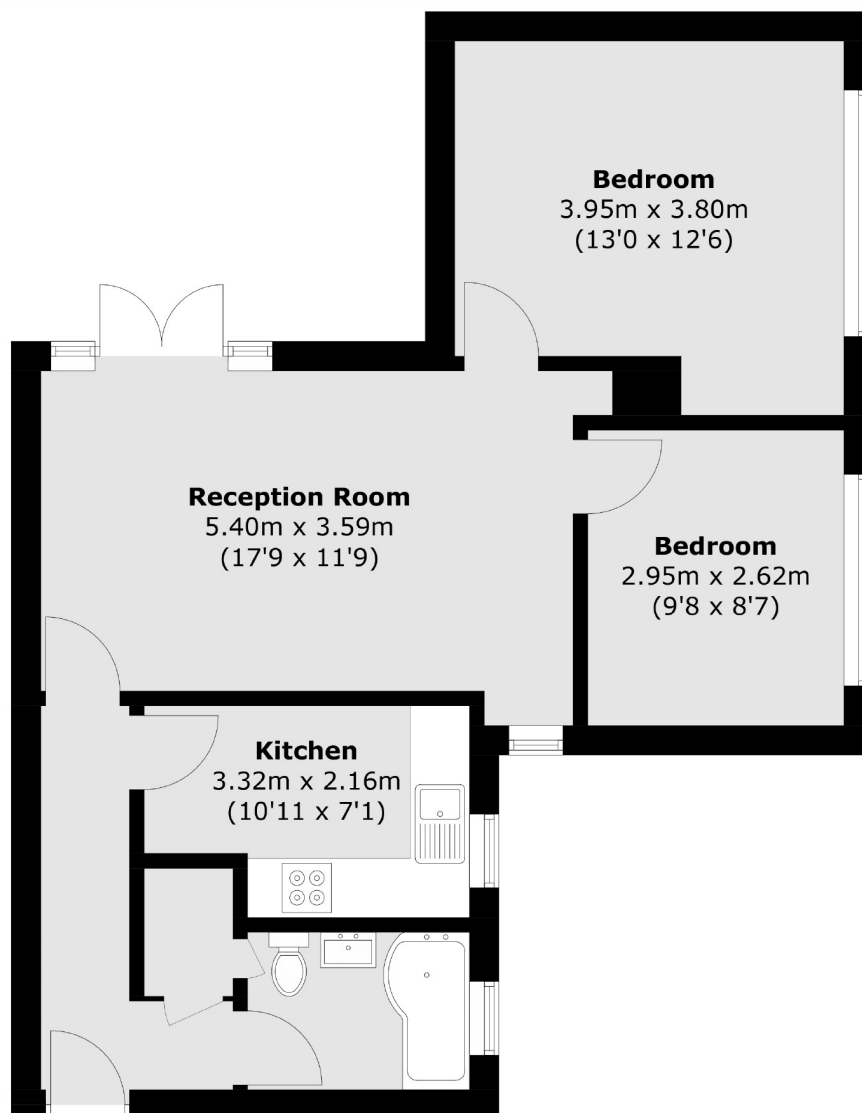


The property comprises: secure communal entrance, private inner hallway with a large utility cupboard with plumbing for a washing machine and space for a dryer, a good sized light and airy reception room providing a comfortable lounge and dining room with double doors leading onto a private garden. There is a kitchen with contemporary fitted white wall and base units with integrated fridge with freezer compartment, oven, hob and slim line dishwasher, a master double bedroom, a second bedroom and an attractive bathroom/wc with a white three piece suite.

Perfectly located in the heart of Abbeville Village yet within easy reach of Clapham Common and Clapham South underground stations.







Ground Floor

Total area (approx.): 59.0 sq. m (635.1 sq. ft)

Jacksons Streatham
1-3 De Montfort Parade
Streatham High Road
Streatham
London
SW16 1BU

Energy Rating: D We aim to make our particulars both accurate and reliable. However they are not guaranteed; nor do they form part of an offer or contract. If you require clarification on any points then please contact us, especially if you're traveling some distance to view. Please note that appliances and heating systems have not been tested and therefore no warranties can be given as to their good working order.