



Narbonne Avenue, SW4

£1,450,000

**** Guide Price £1,450,000-£1,475,000 **** A substantial and unextended terraced Victorian family house which has been well maintained and yet represents a 'blank canvas' for an incoming purchaser to modernise and extend

- Unmodernised Family House
- Four Double Bedrooms
- Two Bathrooms
- Scope to Extend
- Period Features
- Close to Clapham Common



Arranged over three storeys the classic configuration of two reception rooms on the ground floor could be opened into one. The existing lobby leading to the garden, lends itself as a ground floor W.C and the large kitchen has scope to be extended into the side return. Over the first and second floors are four generous size double bedrooms served by two bathrooms. There's a useful storage cellar and a good size rear garden.

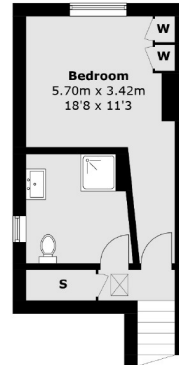
Narbonne Avenue is one of the most popular residential roads in Abbeville Village as its adjacent to Clapham Common and leads down into Abbeville Village with its bespoke independent shops, bars, restaurants and cafe's. Clapham South tube is a short walk away.



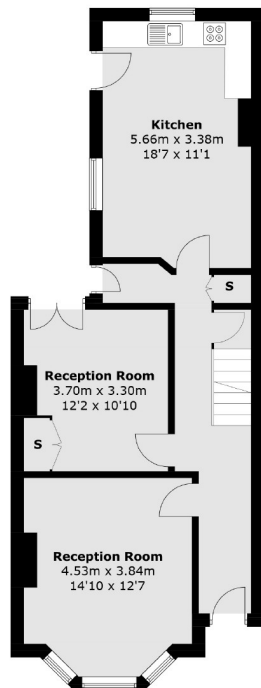




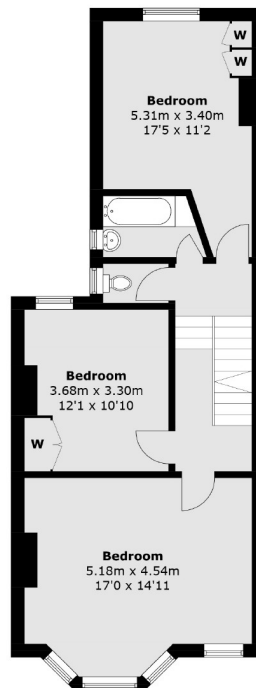
Basement



Second Floor



Ground Floor



First Floor

Total area (approx.): 161.7 sq. m (1,740.4 sq. ft)
(Including Basement)

Jacksons Clapham
73 Abbeville Road
London
SW4 9JN
020 8875 7995
clapham.sales@jacksonsestateagents.com

Energy Rating: D We aim to make our particulars both accurate and reliable. However they are not guaranteed; nor do they form part of an offer or contract. If you require clarification on any points then please contact us, especially if you're traveling some distance to view. Please note that appliances and heating systems have not been tested and therefore no warranties can be given as to their good working order.