



Pendle Road, SW16

£2,450 PCM

A beautifully presented three double bedroom house located in the heart of Furzedown. This property would make the perfect family home.

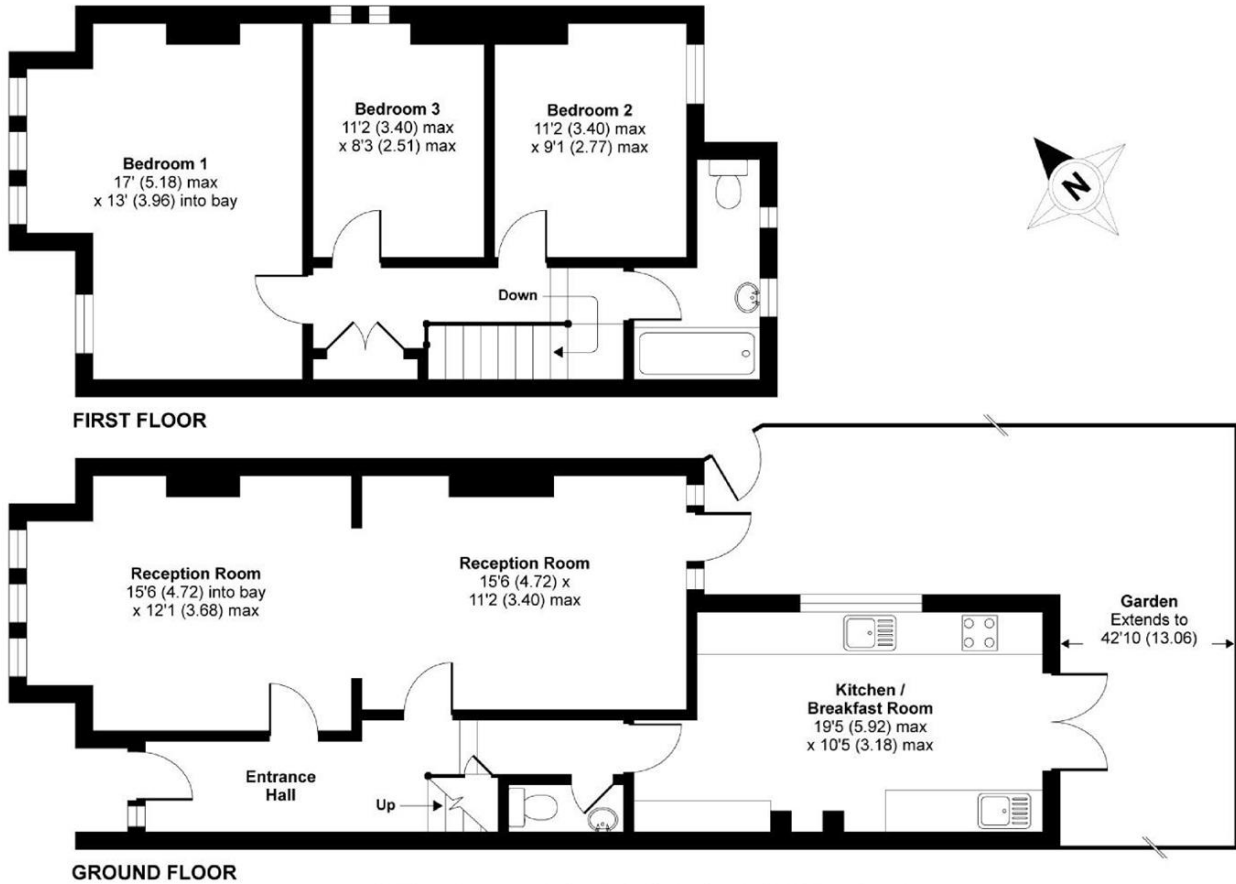
- Victorian Period House
- Large Through Reception
- Three Double Bedrooms
- Kitchen Breakfast Room
- Private Rear Garden
- Close To Schools

For further information on the costs associated with renting a property, please pop into our office or visit our website.



The property is ideally located within close proximity of both Graveney and Penwortham schools.





APPROX. GROSS INTERNAL FLOOR AREA 1216 SQ FT 113 SQ METRES

Pendle Road, London, SW16

Copyright nichecom.co.uk 2012 Produced for Jacksons the Independent Estate Agents REF : 306285

Jacksons Tooting
 26 Tooting Bec Road
 London
 SW17 8BD
 020 8767 0522
tooting.lettings@jacksonsestateagents.com

Energy Rating: TBC We aim to make our particulars both accurate and reliable. However they are not guaranteed; nor do they form part of an offer or contract. If you require clarification on any points then please contact us, especially if you're traveling some distance to view. Please note that appliances and heating systems have not been tested and therefore no warranties can be given as to their good working order.