



Elms Crescent, SW4

£1,050,000

An incredibly spacious first and second floor purpose built Edwardian maisonette, measuring 1,266 Sq. Ft which has its own private entrance, a private rear garden and a share of the freehold.

- Share of Freehold
- Private Garden
- 1,266 Square Feet
- Three Double Bedrooms
- 4th Bedroom/Study
- Large Reception and Kitchen

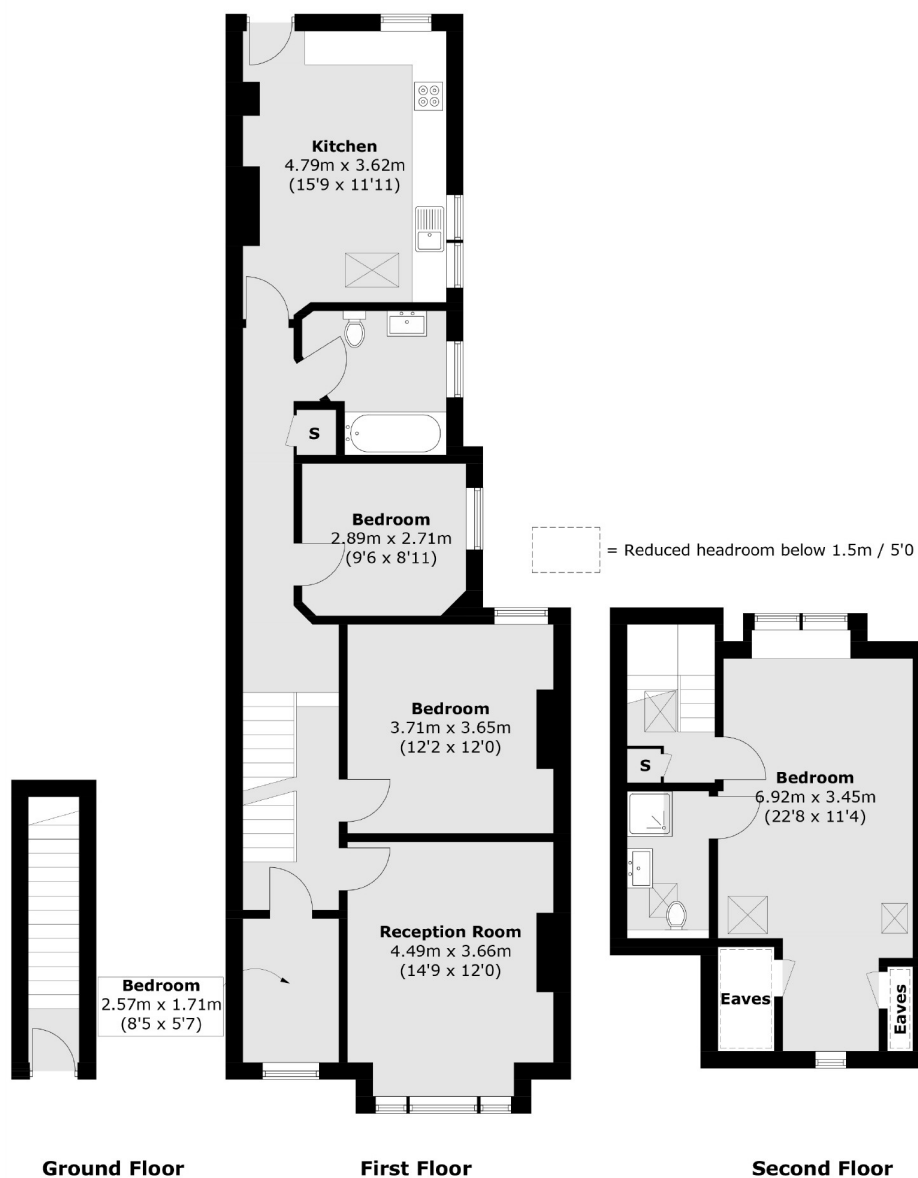


Entered on the ground floor there is a hallway and stairs to the first floor landing. The main reception room at the front has exposed oak flooring, period features and wonderful large sash windows. Adjacent to this room is the smallest fourth bedroom/study which potentially can be expanded into if needed. On this floor there are two more double bedrooms served by a large family bathroom with a further enormous double bedroom with an en-suite shower room on the top floor. Finally back on the first floor is a large dine in kitchen which has an extensive range of units and door with stone steps down to a private decked and landscaped rear garden. There's a brick store cupboard useful for storage in the garden.

Elms Crescent, running parallel with Abbeville Road is therefore very close to the heart of the 'Village' and therefore close to all local shops, café's, restaurants and bars. Clapham Common is easily accessible plus tube stations at Clapham South and Clapham Common add to the accessibility.







Total area (approx.): 117.7 sq. m (1,266.8 sq. ft)
(Excluding Eaves)

Jacksons Earlsfield
372-374 Garratt Lane
Earlsfield
London
SW18 4ES
020 8971 7979

Energy Rating: E We aim to make our particulars both accurate and reliable. However they are not guaranteed; nor do they form part of an offer or contract. If you require clarification on any points then please contact us, especially if you're traveling some distance to view. Please note that appliances and heating systems have not been tested and therefore no warranties can be given as to their good working order.