



## Poynders Road, SW4

£775,000

A beautifully presented four bedroom modern town house arranged over three floors which benefits from a large garden and secure off street parking.

- Freehold House
- Double Glazed Windows
- Four Double Bedrooms
- Two Bathrooms
- Large Garden
- Secure Private Parking



The house is set far back from the road, beyond a long private garden. Once inside it's evident this is a very well maintained home that offers flexible accommodation. With two bedrooms on the ground floor and a shower room, one is used as a home office. There is extensive storage on this level too. The first floor provides a huge open plan reception and fitted kitchen whilst the top floor has the principal bedroom plus a further double room and family bathroom.

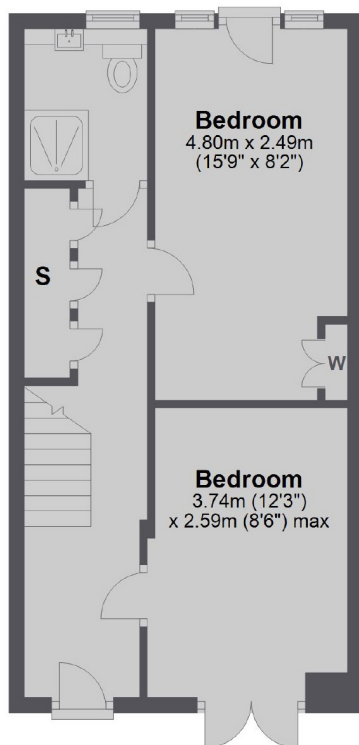
At the rear is a secure gated parking area and at the front the large low maintenance garden.

Poynders Road is the main road that runs up to Clapham Common and the tube at Clapham South. Abbeville Village is also close at hand.

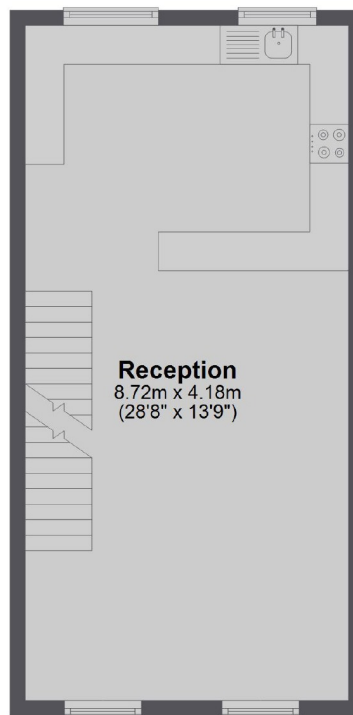




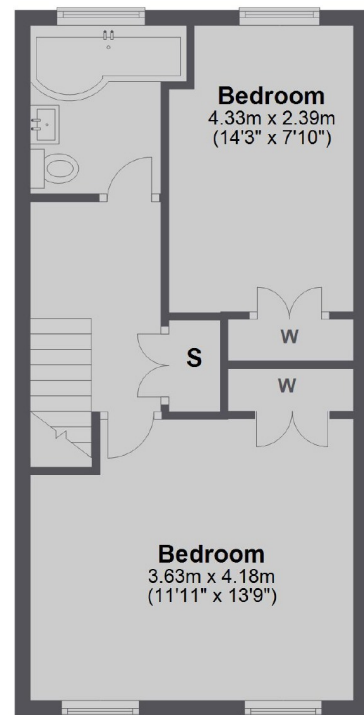
Ground Floor



First Floor



Second Floor



Total area: approx. 109.0 sq. metres (1172.9 sq. feet)

Jacksons Clapham  
73 Abbeville Road  
London  
SW4 9JN  
020 8875 7995  
[clapham.sales@jacksonsestateagents.com](mailto:clapham.sales@jacksonsestateagents.com)

Energy Rating: D We aim to make our particulars both accurate and reliable. However they are not guaranteed; nor do they form part of an offer or contract. If you require clarification on any points then please contact us, especially if you're traveling some distance to view. Please note that appliances and heating systems have not been tested and therefore no warranties can be given as to their good working order.