



## Gibsons Hill, SW16

£795,000

An immaculately presented three bedroom home situated on a tree lined road a stones throw from Streatham Common and Norwood Grove. This property further benefits from an open plan kitchen and

- Semi-Detached
- Open Plan Living
- Three Bedrooms
- Off Street Parking
- Great Location
- Scope To Extend

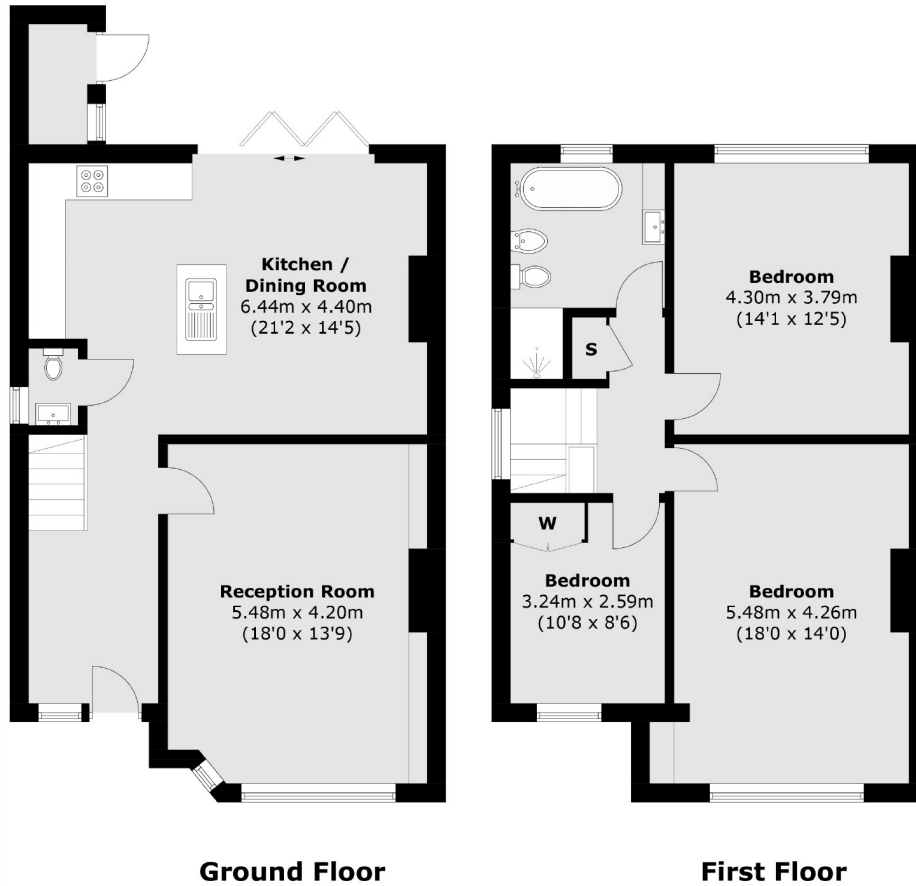


Gibsons Hill is ideally located close to Streatham High Road and the wide variety of bars, cafés and other local amenities it has to offer. Transport links are found at Streatham Common Station, Norbury and West Norwood train stations providing convenient links to the City. The wide green open spaces of Streatham Common, The Rookery and Norwood Grove are also close by.









Total area (approx.): 124.0 sq. m (1,334.6 sq. ft)  
External Store area (approx.): 2.0 sq. m (21.5 sq. ft)

Jacksons Streatham  
1-3 De Montfort Parade  
Streatham High Road  
Streatham  
London  
SW16 1BU

Energy Rating: We aim to make our particulars both accurate and reliable. However they are not guaranteed; nor do they form part of an offer or contract. If you require clarification on any points then please contact us, especially if you're traveling some distance to view. Please note that appliances and heating systems have not been tested and therefore no warranties can be given as to their good working order.