



Gleneagle Road, SW16

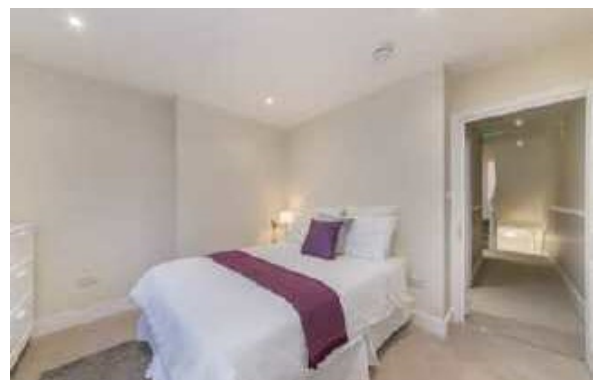
£925,000

A large five bedroom Victorian family home on a highly desirable residential road in Streatham. The house benefits from a large private garden, off street parking and is ideally located near

- Victorian Property
- Five Bedrooms
- Three Bathrooms
- Off Street Parking
- Large Private Garden
- No Onward Chain



Gleneagle Road is well located for all the amenities of the area including many bars, independent coffee shops, restaurants, several large supermarkets, leisure centre and health clubs. Streatham Common itself and multiple transport links including three train stations and numerous bus routes leading into London are close at hand.







Jacksons Streatham
1-3 De Montfort Parade
Streatham High Road
Streatham
London
SW16 1BU

Energy Rating: D We aim to make our particulars both accurate and reliable. However they are not guaranteed; nor do they form part of an offer or contract. If you require clarification on any points then please contact us, especially if you're traveling some distance to view. Please note that appliances and heating systems have not been tested and therefore no warranties can be given as to their good working order.