



## Rhodesia Road, SW9

£995,000

A three storey period four bedroom two bathroom terraced house with impressive living space and a pretty secluded garden.

- Four bedrooms
- Two bathrooms
- Large kitchen
- Potential to extend
- Great central location
- Quiet road





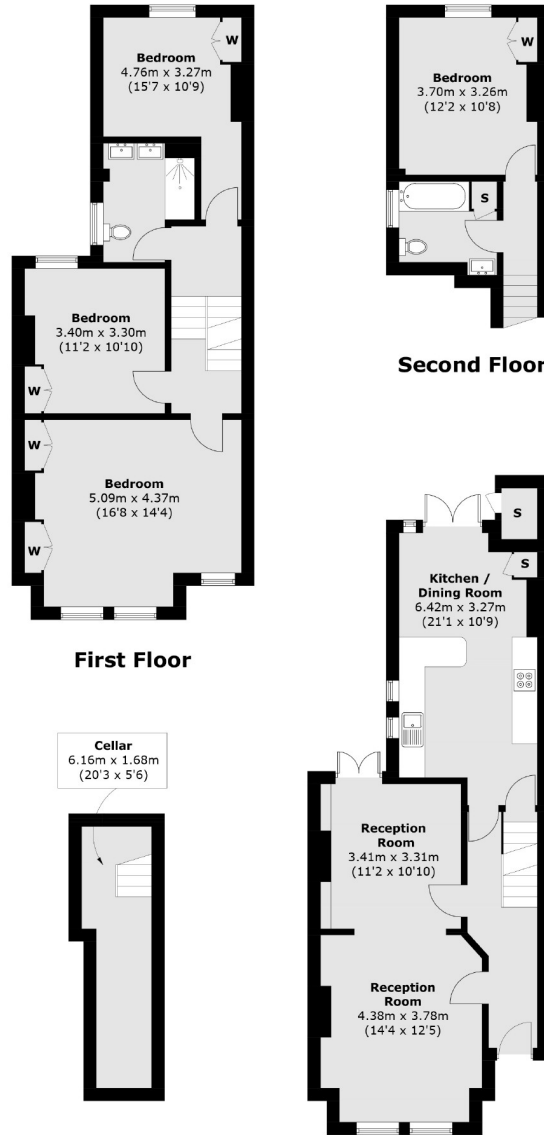
On the ground floor of this attractive house there is a good sized living room at the front and a large kitchen dining room at the back. On the the middle floor are three bedrooms and a bathroom. On the top floor is a further bedroom and second bathroom. There is potential to extend further on the ground floor.

Rhodesia Road is only a short walk to Clapham North and Clapham High St. It is close to excellent travel links via Clapham North (Northern line) and Stockwell (Victoria line). A great central location in a quiet tucked away road.









**Basement Level**

**Ground Floor**

Total area (approx.): 135.0 sq. m (1452.9 sq. ft)

Basement Level: 8.8 sq. m (94.7 sq. ft)

External Store: 1.0 sq. m (10.7 sq. ft)

Jacksons Earlsfield  
 372-374 Garratt Lane  
 Earlsfield  
 London  
 SW18 4ES  
 020 8971 7979

Energy Rating: F We aim to make our particulars both accurate and reliable. However they are not guaranteed; nor do they form part of an offer or contract. If you require clarification on any points then please contact us, especially if you're traveling some distance to view. Please note that appliances and heating systems have not been tested and therefore no warranties can be given as to their good working order.