

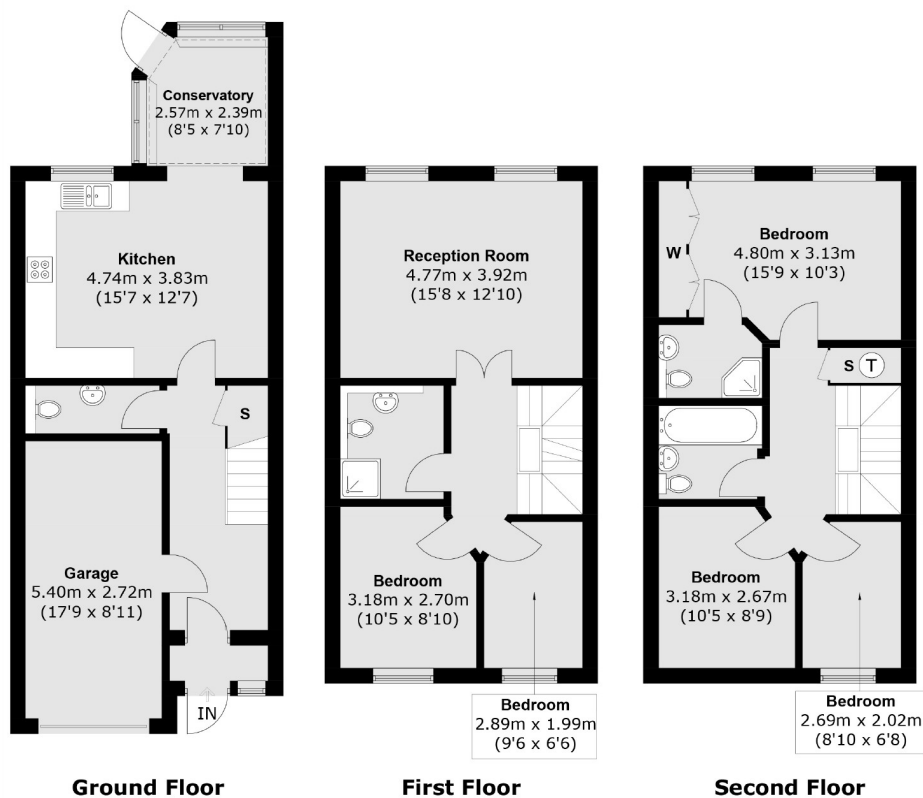


## Lisle Close, SW17

£850,000

This five bedroom house is arranged over three floors in a quiet development near Tooting Bec Common.

- Five Bedrooms
- Off Street Parking
- Three Bathrooms
- Residential Road
- Tooting Bec
- Private Garden



**Total area (approx.): 149.1 sq. m (1,604.9 sq. ft)**  
**(Including Garage)**

Jacksons Tooting  
 26 Tooting Bec Road  
 London  
 SW17 8BD  
 020 8767 0522  
[tooting.sales@jacksonsestateagents.com](mailto:tooting.sales@jacksonsestateagents.com)

Energy Rating: C We aim to make our particulars both accurate and reliable. However they are not guaranteed; nor do they form part of an offer or contract. If you require clarification on any points then please contact us, especially if you're traveling some distance to view. Please note that appliances and heating systems have not been tested and therefore no warranties can be given as to their good working order.