



Leigham Court Road, SW16

£575,000

A large period conversion flat in central Streatham Hill with private off street parking. The property is finished to the highest of standards with solid wood parquet flooring, wet-room style bathroom and large separate

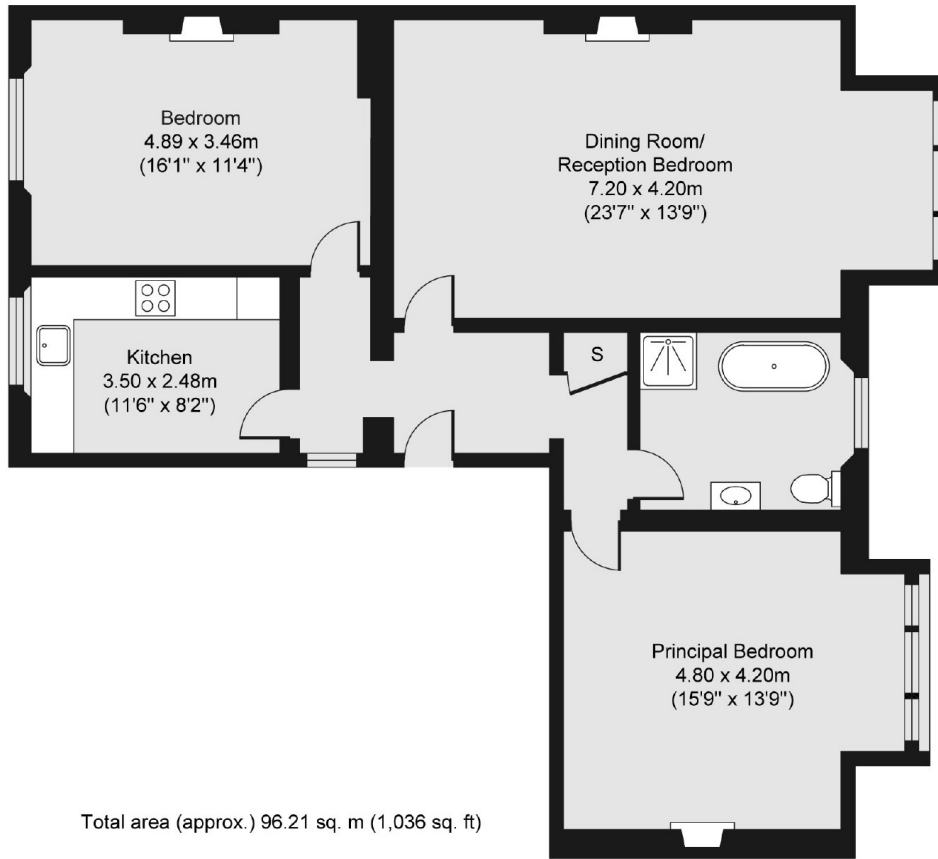
- Two Double Bedrooms
- First Floor Flat
- 1000 Sq Ft
- Allocated Parking
- Share of Freehold
- Private storage room, demised to the property.



Streatham Hill station is close by, with direct trains to London Victoria in approximately 17 minutes. Brixton tube station is a short bus journey away. The area has a great mix of large chain coffee shops, supermarkets and gyms along with smaller independent coffee shops, restaurants, wine bars and retail shops.



First Floor



Total area (approx.) 96.21 sq. m (1,036 sq. ft)

Jacksons Earlsfield
372-374 Garratt Lane
Earlsfield
London
SW18 4ES
020 8971 7979

Energy Rating: C We aim to make our particulars both accurate and reliable. However they are not guaranteed; nor do they form part of an offer or contract. If you require clarification on any points then please contact us, especially if you're traveling some distance to view. Please note that appliances and heating systems have not been tested and therefore no warranties can be given as to their good working order.