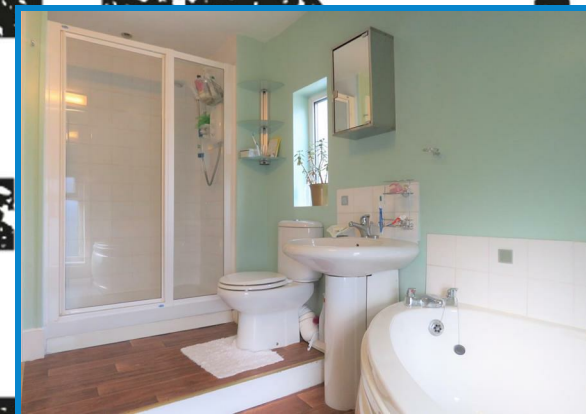
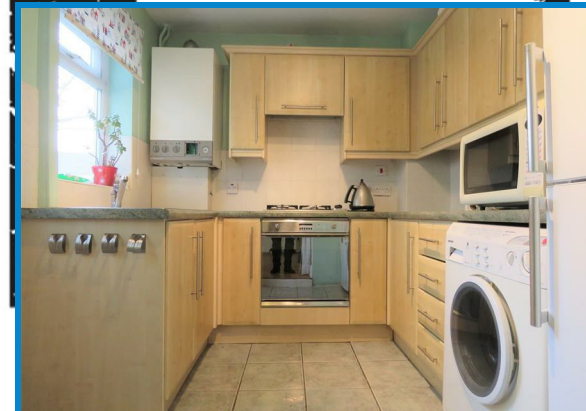


# SAL

# LAGRE



18 Tattersall Road, Liverpool , Merseyside L21 2PJ  
Offers over £85,000

**bluerow**  
SALES | LETTINGS | INVESTMENTS

Bluerow Homes are delighted to offer for sale a two bedroom mid terrace.

This deceptively spacious property briefly comprises; Vestibule Entrance, two reception rooms, kitchen, first floor landing, two bedrooms and a four piece modern bathroom.

The property further benefits from gas central heating and uPVC double glazing. To the rear there is walled rear yard with brick built storage unit which is not directly overlooked. Ideally property for both home buyers and investors. Early inspection is recommended!

- Two bedroom
- Two reception rooms
- Gas fired central heating
- Separate Kitchen
- One street parking
- No Chain!!!!

Ideal first time buyer home or Investor buy

**Vestibule Entrance**

Wood strip flooring, alarm panel, door leading to;

**Front Reception**

13'4" into bay x 12'10" minimum (4.08 into bay x 3.93 minimum)

uPVC double glazed splay bay to front, gas fired central heating radiator, wood strip flooring, ceiling lighting, arch through to;

**Rear Reception**

13'6" max x 12'11" minimum (4.14 max x 3.94 minimum)

uPVC double glazed window to rear, gas fired central heating radiator, wood strip flooring, ceiling lighting, stairs leading to upper flooring, step down to;

**Kitchen**

9'0" x 7'7" (2.76 x 2.32)

Wall, drawer and base units with work surfaces. Integrated

gas hob, oven and extractor, space for fridge/freezer and plumbing for washing machine. Stainless steel sink drainer unit with mixer tap. Worcester gas combo boiler, part tiled walls, tiled floor, uPVC double glazed window and door to rear yard.

**Landing**

Carpet staircase and landing, access hatch for loft, doors leading to all rooms

**Front bedroom one**

10'10" x 10'6" to front of drobes (3.32 x 3.22 to front of drobes )

uPVC double glazed window to front, carpet flooring, gas fired central heating radiator, wall to wall mirror sliding wardrobes, ceiling lighting

**Rear Bedroom Two**

11'1" into window x 10'1" (3.39 into window x 3.08)

uPVC double glazed window to rear, carpet flooring, gas fired central heating radiator, built in closet, ceiling lighting

**Bathroom**

Good size family bathroom briefly comprising; corner panel bath, pedestal wash hand basin, low level w.c., large step in step with glazed sliding screen and electric shower, two uPVC double glazed frosted windows, gas fired central heating radiator, ceiling lighting

**Loft room**

With pull down ladder, carpet flooring, lighting. Good size additional storage space

**Rear Yard**

Walled Yard, false grass with brick built storage, gate leading to gated entry.

