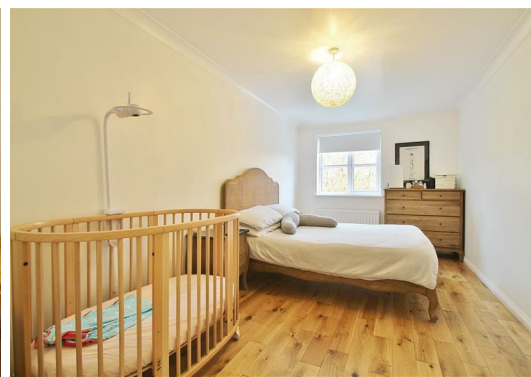


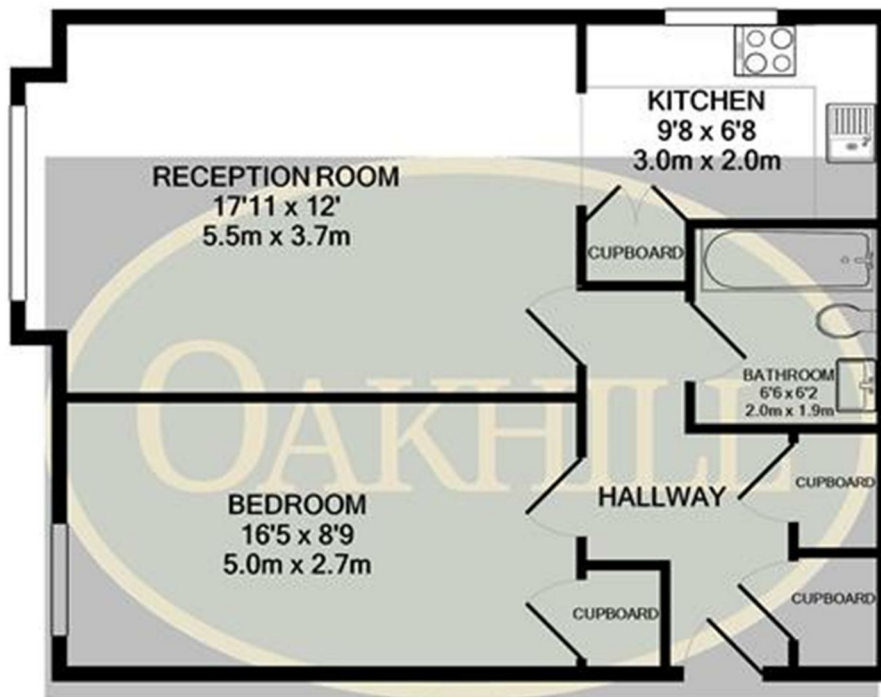
OAKHILL



Draymans Way, Isleworth, Middlesex TW7 6SY

SALE AGREED BY OAKHILL, SIMILAR PROPERTIES REQUIRED. Beautifully presented, spacious one-bedroom first-floor flat situated in a quiet and popular development. The property has been renovated to a high standard throughout, with a modern kitchen and bathroom, wooden flooring, double-glazed windows and combi boiler. The flat also benefits from allocated parking and ample storage. It is ideally located close to local schools, transport links and amenities, plus the Thames riverside.

£295,000



Whilst every attempt has been made to ensure the accuracy of the floor plan contained here, measurements of doors, windows, rooms and any other items are approximate and no responsibility is taken for any error, omission, or mis-statement. This plan is for illustrative purposes only and should be used as such by any prospective purchaser. The services, systems and appliances shown have not been tested and no guarantee as to their operability or efficiency can be given
Made with Metropix ©2021

Energy Efficiency Rating		
	Current	Potential
Very energy efficient - lower running costs		
(92 plus) A		
(81-91) B		
(69-80) C		
(55-68) D		
(39-54) E		
(21-38) F		
(1-20) G		
Not energy efficient - higher running costs		
England & Wales	EU Directive 2002/91/EC	

Environmental Impact (CO ₂) Rating		
	Current	Potential
Very environmentally friendly - lower CO ₂ emissions		
(92 plus) A		
(81-91) B		
(69-80) C		
(55-68) D		
(39-54) E		
(21-38) F		
(1-20) G		
Not environmentally friendly - higher CO ₂ emissions		
England & Wales	EU Directive 2002/91/EC	



6 South Street, Isleworth, TW7 7BG
Tel: 0208 568 4433
info@oakhillagents.co.uk
www.oakhillagents.co.uk

OAKHILL