

Chard

— Lettings —



New Kings Road, SW6

£530 pw (£2,297 pcm)

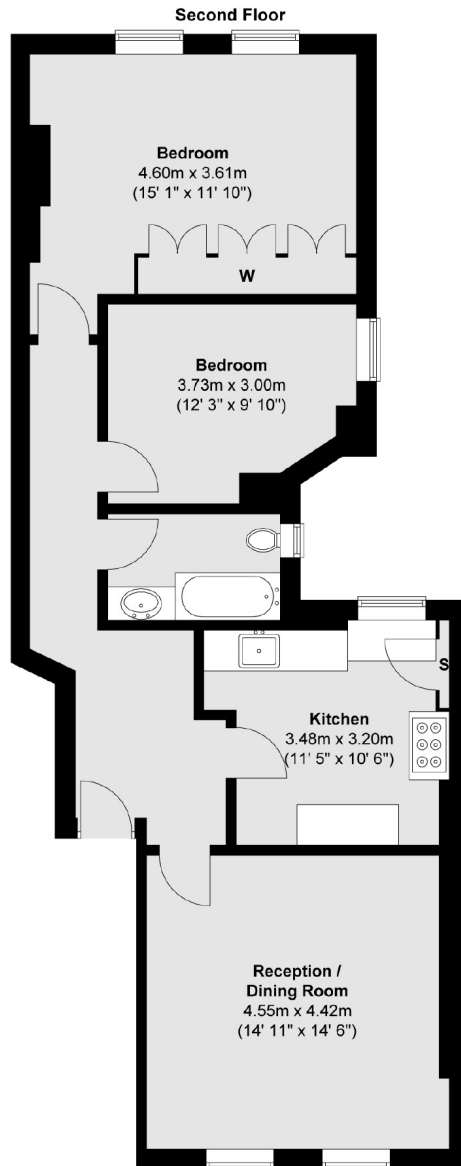
Modern two bedroom flat to let in a well known mansion block in Parsons Green. Set on the second floor, with spacious entrance hall, large living room with plenty of space for dining, and separate kitchen. Two good sized double rooms, plenty of storage and lots of natural light.

Churchfield Mansions is close to Parsons Green station with many bus routes leading into Putney and the city. This property is close to a variety of superstores with local amenities on Parsons Green lane and a selection of highly recommended restaurants and cafés.

- Two double bedrooms • Mansion Block • Spacious Reception •
- Modern bathroom • Second Floor • Parsons Green Underground •

Chard

Lettings



Total area (approx.) : 78.7 sq. m (847 sq. ft)

Chard Fulham
5 Harwood Road,
London, SW6 4QP
020 7384 1400
fulhamlettings@chard.co.uk

Energy Rating: C. We aim to make our particulars both accurate and reliable. However they are not guaranteed; nor do they form part of an offer or contract. If you require clarification on any points then please contact us, especially if you're traveling some distance to view. Please note that appliances and heating systems have not been tested and therefore no warranties can be given as to their good working order.