

FLETCHERS

ESTATE AGENTS



Bedford Road, W4

£1,961 Per week

A beautifully presented and redecorated semi-detached five bedroom home set on a corner plot in Bedford Park with over 3,200 sq ft of accommodation, providing plenty of space for a growing family. The ground floor of the property comprises of a large reception room which opens on to an impressive conservatory dining area and large kitchen. Also on the ground floor is a utility room, wc and a self contained studio with a small kitchen and bathroom.

To the first floor there are three large bedrooms, one with en suite and dressing room and a bathroom. There are a further two good sized bedrooms and a bathroom on the second floor. All bedrooms offer great storage space and there is a well maintained garden with patio area and water feature.



A beautifully presented and redecorated semi-detached five bedroom home set on a corner plot in Bedford Park with over 3,200 sq ft of accommodation, providing plenty of space for a growing family.

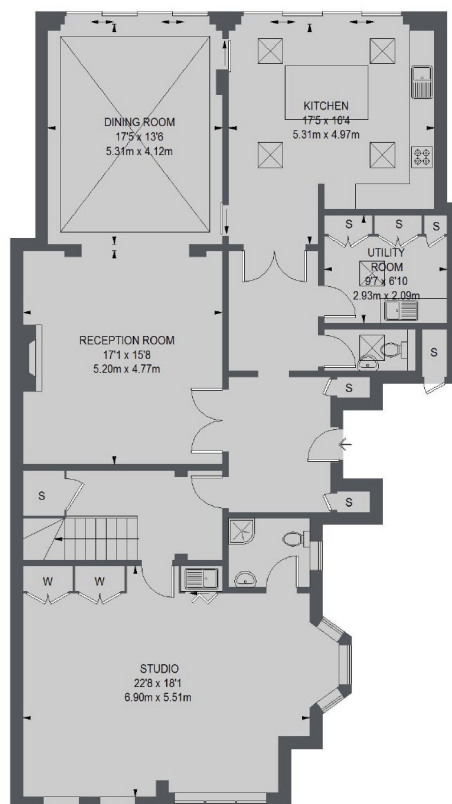
Bedford Road is located in the heart of the popular Bedford Park conservation area. Numerous transport links are close by such as Turnham Green and Chiswick Park tube stations as well as a number of bus routes. Chiswick High Road with plenty of shops, cafes and restaurants are a short walk away as are a number of excellent schools.

- Five Bedrooms • Semi-Detached Home • Self Contained Studio •
- Large Garden • Bedford Park • Great Transport Links •

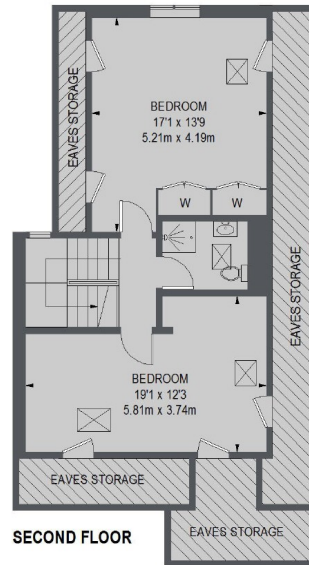


FLETCHERS

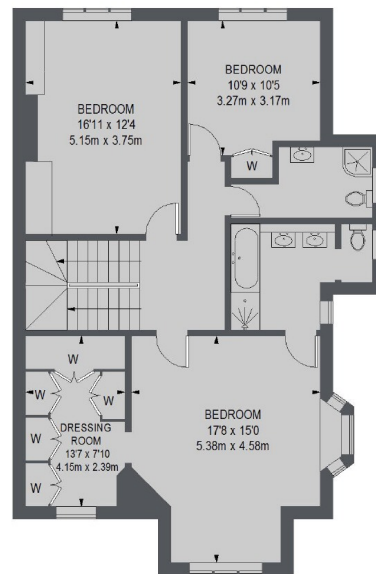
ESTATE AGENTS



GROUND FLOOR



SECOND FLOOR



FIRST FLOOR

TOTAL APPROX. FLOOR AREA
(EXCLUDING EAVES STORAGE)
3219 SQ. FT. (299.02 SQ. M.)

Fletchers Chiswick High Road Lettings
86 Chiswick High Road
Chiswick
London
W4 1SY
020 8742 4100

Energy Rating: E We aim to make our particulars both accurate and reliable. However they are not guaranteed; nor do they form part of an offer or contract. If you require clarification on any points then please contact us, especially if you're traveling some distance to view. Please note that appliances and heating systems have not been tested and therefore no warranties can be given as to their good working order