



5 Parker Street, Watford, WD24 5EY

Price £525,000

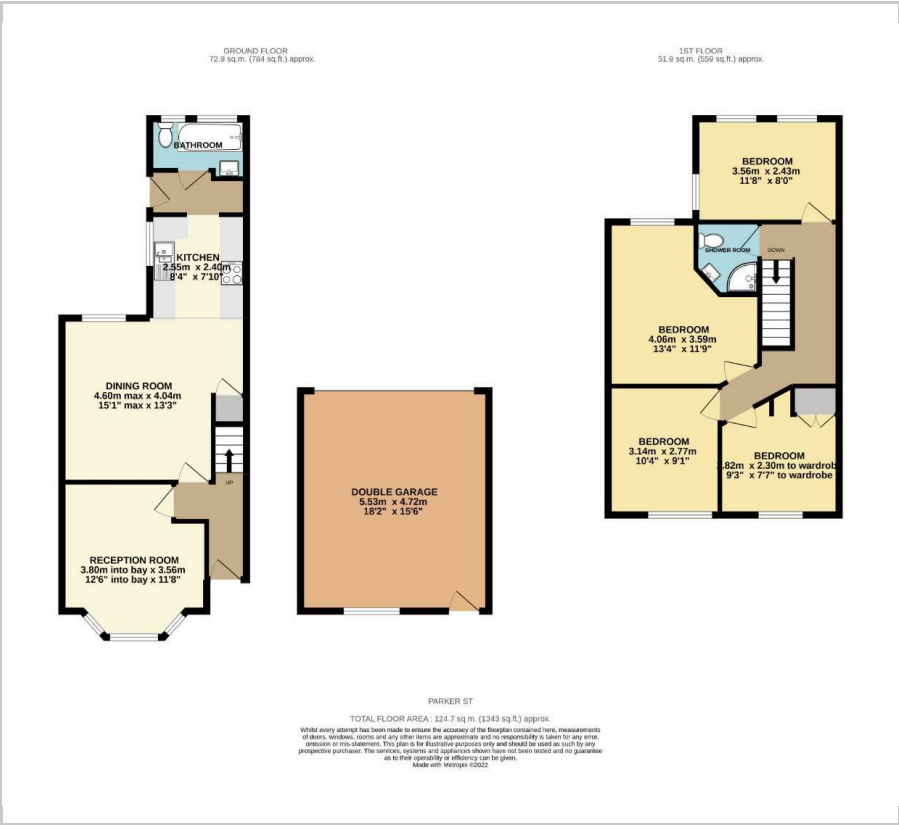


**** FOUR BEDROOM TERRACED HOUSE - DETACHED DOUBLE GARAGE TO THE REAR - ENTRANCE HALL - TWO SEPARATE RECEPTION ROOMS - KITCHEN & UTILITY AREA - DOWNSTAIRS BATHROOM - FOUR BEDROOMS TO THE FIRST FLOOR - 1ST FLOOR SHOWER ROOM - REAR GARDEN - NO UPPER CHAIN **** We are delighted to offer for sale this four bedroom terraced house situated on this popular North Watford road and being suitably located for the commuter with Watford Junction mainline railway station being within a distance of approximately half a mile. The property benefits from a garden to the rear and at the rear of this there is a recently constructed detached double garage with an electric remote roller door and vehicular access is gained to this via a right-of-way. The property is offered with no upper chain and we would ask that you contact us without delay to arrange an early appointment to view.

- Four Bedroom Home
- Kitchen & Downstairs Bathroom
- 4 Bedrooms
- Double Garage At Rear Of Garden
- 2 Separate Reception Rooms
- 1st Floor Shower Room
- Rear Garden
- No Upper Chain



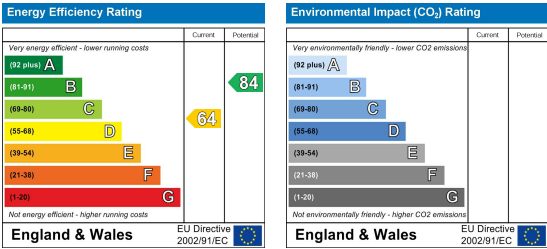
Floor Plan



Area Map



Energy Efficiency Graph



These particulars, whilst believed to be accurate are set out as a general outline only for guidance and do not constitute any part of an offer or contract. Intending purchasers should not rely on them as statements of representation of fact, but must satisfy themselves by inspection or otherwise as to their accuracy. No person in this firms employment has the authority to make or give any representation or warranty in respect of the property.