

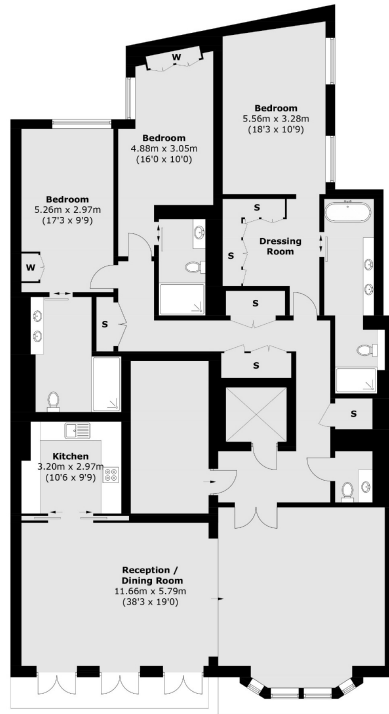


QUEEN STREET

MAYFAIR W1J



UNDER OFFER AN IMPRESSIVE THREE BEDROOM APARTMENT WITH HIGH CEILINGS THROUGHOUT AND FLOOR TO CEILING WINDOWS, SPANS ACROSS TWO BUILDINGS.



First Floor

A boutique development of six three-bedroom luxury apartments in the heart of Mayfair. All upper levels benefit from a privately coded lift transporting you directly to your own apartment, with the additional service of a uniformed, dedicated Porter.

Situated in the heart of Mayfair on a residential one way street connecting Curzon Street and Charles Street. Moments from Berkeley Square, Grosvenor Square and Hyde Park.

Each apartment has been designed with the discerning owner in mind and will be furnished to the highest specification. Wherever possible, natural light and outside space have been maximised using thoughtfully designed light wells, balconies and terraces. All apartments are being offered for sale on a long leasehold basis (999 years), together with a share in the management company that will own the freehold.

FEATURES

- Direct Lift Access
- Lateral
- Three Bedrooms
- Three En Suite Bathrooms
- Open Plan Kitchen/Dining
- Separate Reception

Price: £6,000,000

We aim to make our particulars both accurate and reliable. However they are not guaranteed; nor do they form part of an offer or contract. If you require clarification on any points then please contact us, especially if you're traveling some distance to view. Please note that appliances and heating systems have not been tested and therefore no warranties can be given as to their working order. Energy Rating: D



WETHERELL
MAYFAIR'S FINEST PROPERTIES

102 Mount Street • London • W1K 2TH
T: 020 7529 5566 E: sales@wetherell.co.uk

wetherell.co.uk

NO ONE KNOWS MAYFAIR BETTER THAN WETHERELL