



27 Neston Road, Watford, WD24 7BN

Price £350,000



**** TWO DOUBLE BEDROOM TERRACED HOUSE - BATHROOM OFF LANDING - LOUNGE & DINING ROOM - KITCHEN - REAR GARDEN - IN NEED OF SOME MODERNISATION - SOUGHT AFTER LOCATION - NO UPPER CHAIN **** We are delighted to be favoured with Sole agency instructions to offer for sale this two double bedroom terraced home situated in this popular North Watford location. The property benefits from an entrance porch, two receptions and kitchen to the ground floor with two double bedrooms and bathroom off landing to the first floor. Externally there is a garden to the rear and on road parking to the front. The property is offered with no upper chain, is in need of some modernisation but has been priced accordingly. In order to arrange an early appointment to view, please contact us without further delay.

- Mid Terraced House
- 2 Separate Receptions
- 2 Double Bedrooms
- Rear Garden
- No Upper Chain
- Porch
- Kitchen
- Bathroom Off Landing
- In Need Of Some Modernisation



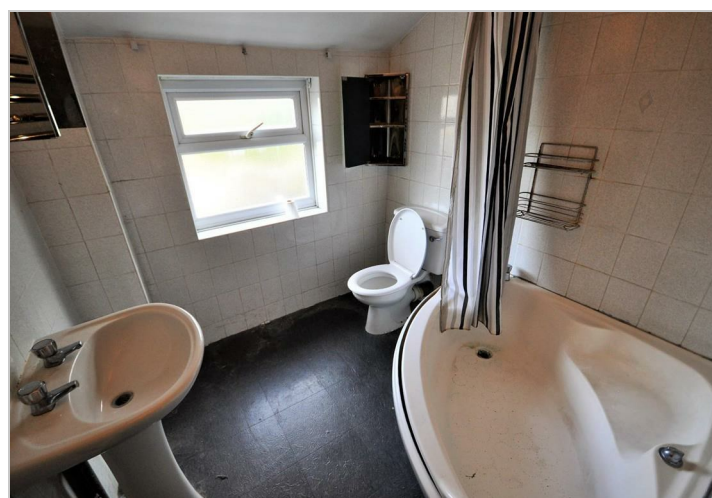
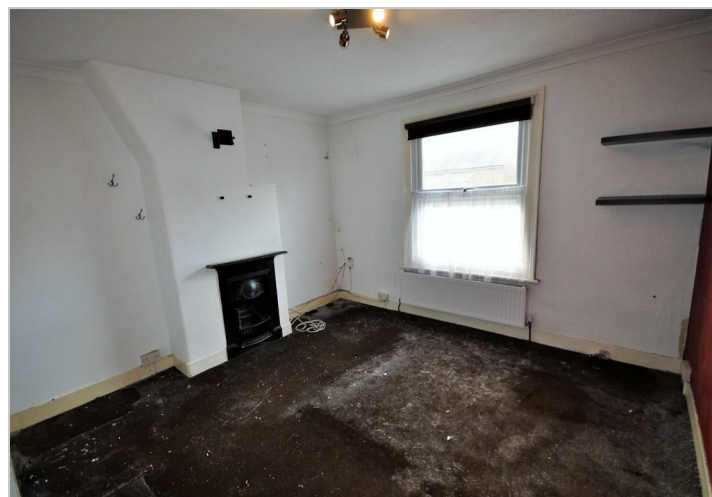
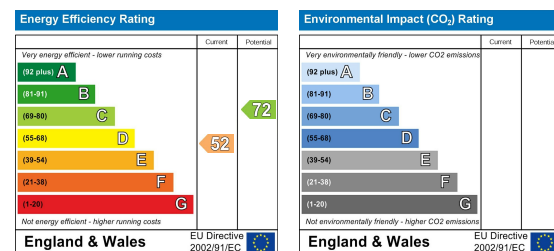
Floor Plan



Area Map



Energy Efficiency Graph



These particulars, whilst believed to be accurate are set out as a general outline only for guidance and do not constitute any part of an offer or contract. Intending purchasers should not rely on them as statements of representation of fact, but must satisfy themselves by inspection or otherwise as to their accuracy. No person in this firm's employment has the authority to make or give any representation or warranty in respect of the property.