

# Frank Harris & Co.



## King's Cross, N1

£900,000

Offers in excess of £900,000: This 1,065 sq ft mews house is offered to the market with no onward chain. The property benefits from 2 double bedrooms, 3 bathrooms and large open plan kitchen and reception room, a second reception room on the first floor. The development is gated so it is very safe and secure.



Rufford Street is a 12 minutes walk to Kings Cross Station, a 22 minutes walk to Angel Station and just 25 minutes walk to Camden Town.

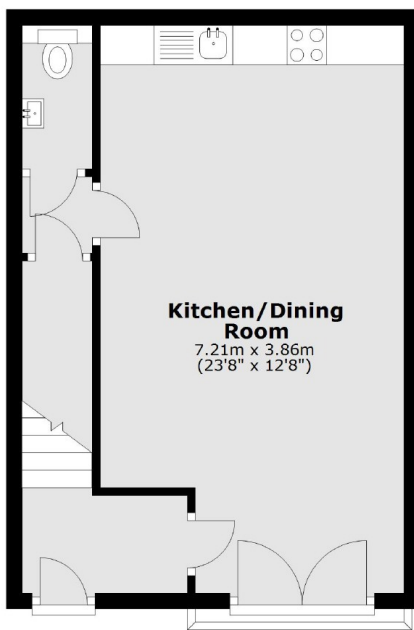
- OIEO £900,000 • Private Parking • 2 Double Bedrooms •
- 3 Bathrooms • Long Lease • Gated Development •



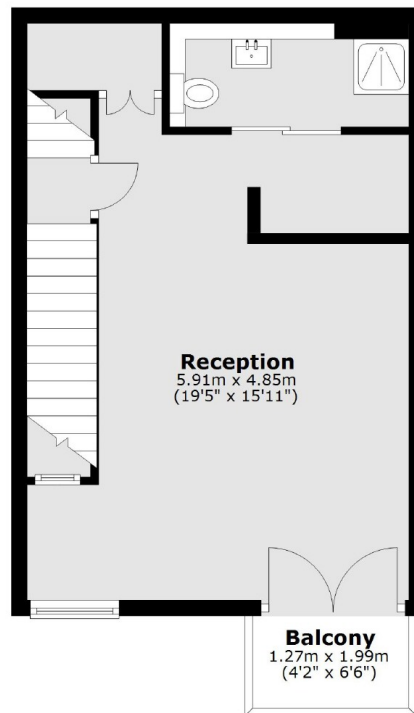


# Frank Harris & Co.

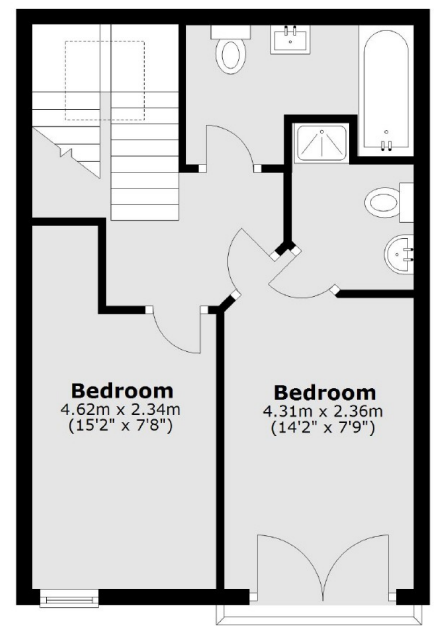
**Ground Floor**



**First Floor**



**Second Floor**



Main area: Approx. 105.2 sq. metres (1132.9 sq. feet)  
Plus balconies, approx. 2.5 sq. metres (27.2 sq. feet)

Frank Harris & Co. Bloomsbury and Kings Cross  
81 Marchmont Street,  
London, WC1N 1AL  
020 7405 4444  
bloomsburysales@frankharris.co.uk

Energy Rating: C. We aim to make our particulars both accurate and reliable. However they are not guaranteed; nor do they form part of an offer or contract. If you require clarification on any points then please contact us, especially if you're traveling some distance to view. Please note that appliances and heating systems have not been tested and therefore no warranties can be given as to their good working order.