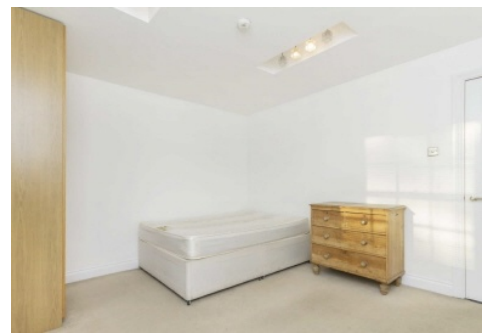
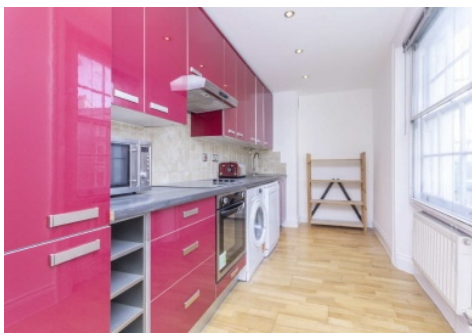


# Chard

— Lettings —



**Fulham Road, SW10**

**£450 pw ( pcm)**

This two double bedroom, two bathroom property is ideally located for Chelsea and Westminster Hospital and Fulham Broadway, making it perfect for professional sharers. It has a spacious living room with lots of natural light and open plan integrated kitchen.

Located close to Fulham Broadway and the edge of Chelsea, a great location for working from home, commuting and enjoying the buzz of London.

- Fulham Road • Two Bathrooms • Two Bedrooms •
- Open Plan • Natural Light • Part Furnished •

# Chard

Lettings

Chard Fulham  
5 Harwood Road,  
London, SW6 4QP  
020 7384 1400  
[fulhamlettings@chard.co.uk](mailto:fulhamlettings@chard.co.uk)

Energy Rating: . We aim to make our particulars both accurate and reliable. However they are not guaranteed; nor do they form part of an offer or contract. If you require clarification on any points then please contact us, especially if you're traveling some distance to view. Please note that appliances and heating systems have not been tested and therefore no warranties can be given as to their good working order.