



Christchurch Road, SW2

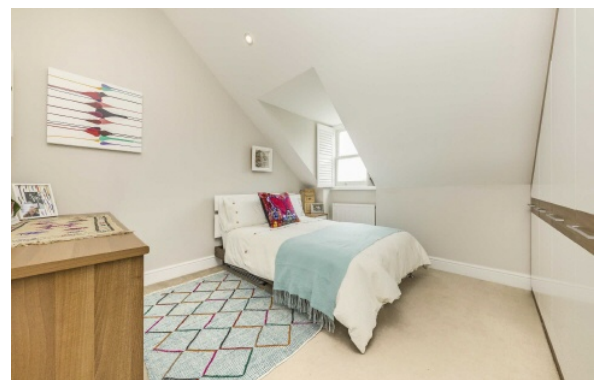
£425,000

A stunning two bedroom apartment finished to a very high specification. This property offers double bedrooms and an open plan living area.

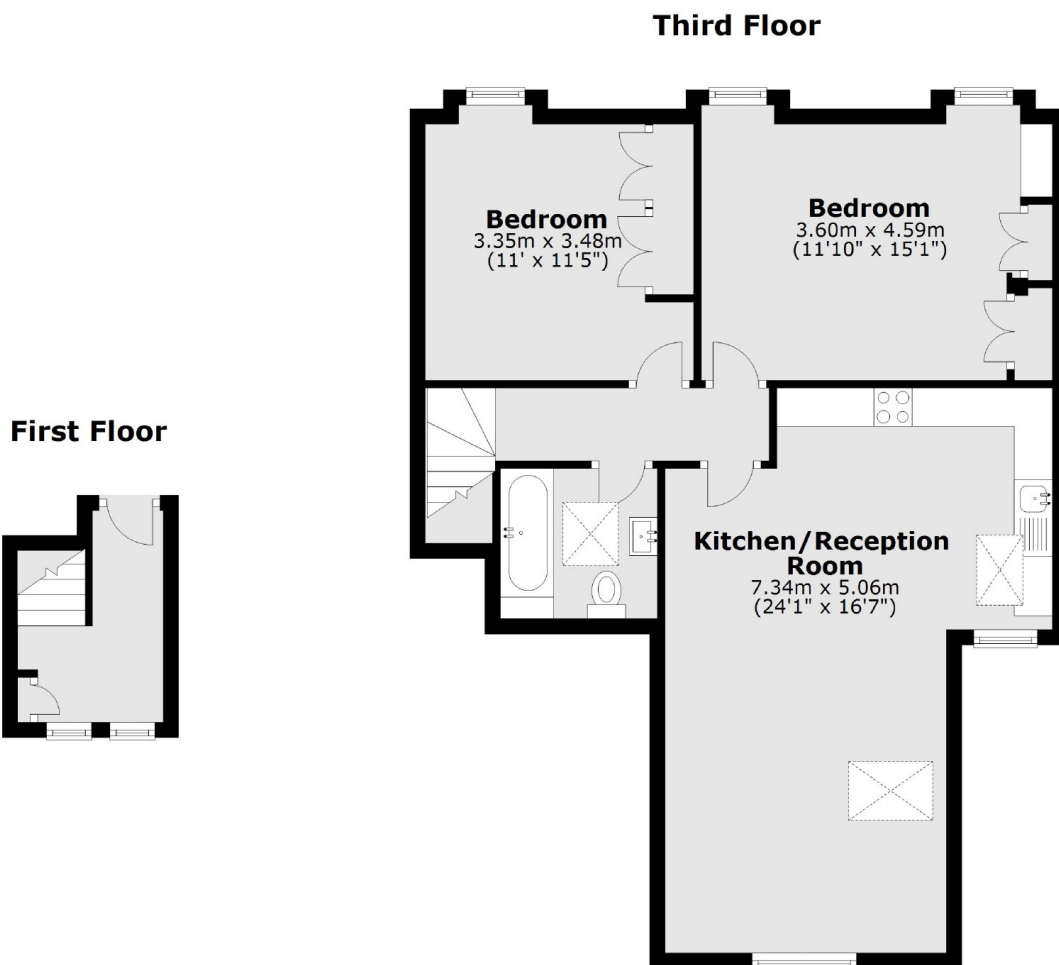
- Share Of Freehold
- Smart Home System
- Double Bedrooms
- Excellent Condition
- Great Connections
- Open Plan Living



Christchurch Road is conveniently placed for easy access to both Brixton and Clapham town centres with their vast array of shops, bars and restaurants. Tulse Hill Mainline station serving London Bridge and the Thameslink line is located a few moments walk away.







Total area: approx. 73.8 sq. metres (794.0 sq. feet)

Jacksons Streatham
1-3 De Montfort Parade
Streatham High Road
Streatham
London
SW16 1BU

Energy Rating: C We aim to make our particulars both accurate and reliable. However they are not guaranteed; nor do they form part of an offer or contract. If you require clarification on any points then please contact us, especially if you're traveling some distance to view. Please note that appliances and heating systems have not been tested and therefore no warranties can be given as to their good working order.