



Elthorne Avenue, W7

£525,000

This instantly impressive two bedroom garden flat is definitely not one to miss out on.

Situated close to Elthorne Park and a choice of shopping and transport offers at West Ealing, Northfields and Boston Manor.



On arrival you will be impressed with the front of this red bricked Victorian conversion.

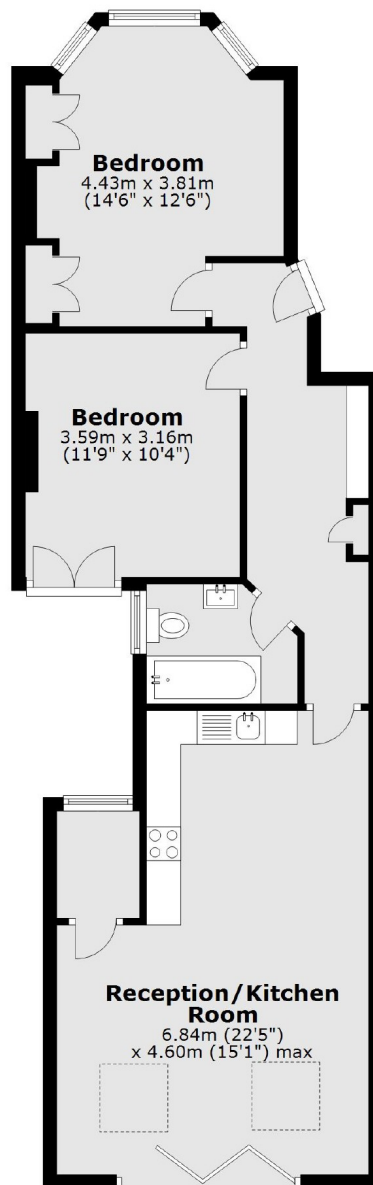
The two double bedrooms with built in wardrobes are to the front of the building, there is an inner hallway to the modern fitted bathroom. You are then lead through to the stunning open plan kitchen/living room which has lots of storage and ample space for dining and lounge areas and enjoys lots of natural light with bi fold doors to the private rear garden.

Set in an increasingly popular area within easy reach of shopping and transport facilities at West Ealing, Northfields and Boston Manor. Offered with no onward chain viewing is a must.

- Victorian Conversion • Two Bedrooms • Private Garden •
 - Good Transport Links • Close To Shops • No Onward Chain •
-



Ground Floor



Total area: approx. 69.5 sq. metres (748.3 sq. feet)

Robertson Smith & Kempson Northfields Sales
116 Northfield Avenue,
London, W13 9RT
020 8566 2340
northfieldssales@robertsonsmithandkempson.co.uk

Energy Rating: C. We aim to make our particulars both accurate and reliable. However they are not guaranteed; nor do they form part of an offer or contract. If you require clarification on any points then please contact us, especially if you're traveling some distance to view. Please note that appliances and heating systems have not been tested and therefore no warranties can be given as to their good working order.