

# ROKSTONE



## Kensington Gardens Square Bayswater W2

50 Kensington Gardens Square is an inspiring example of heritage and a contemporary design, a boutique collection of just 30 beautifully appointed apartments and one penthouse. Situated in Bayswater, just moments away from the rolling green spaces of Hyde Park.

With a 24-hour concierge providing a seamless service to assist with all tenants day to day needs. Entry to the building is securely controlled and each apartment comes with a video entrance phone. Underground car parking is available to all residents, a rarity in Central London.

The property is also conveniently located for the transport links of Queensway (Central Line), Bayswater (District and Circle Lines) as well as easy access to Heathrow via the Paddington Express.

Price £1,125 pw

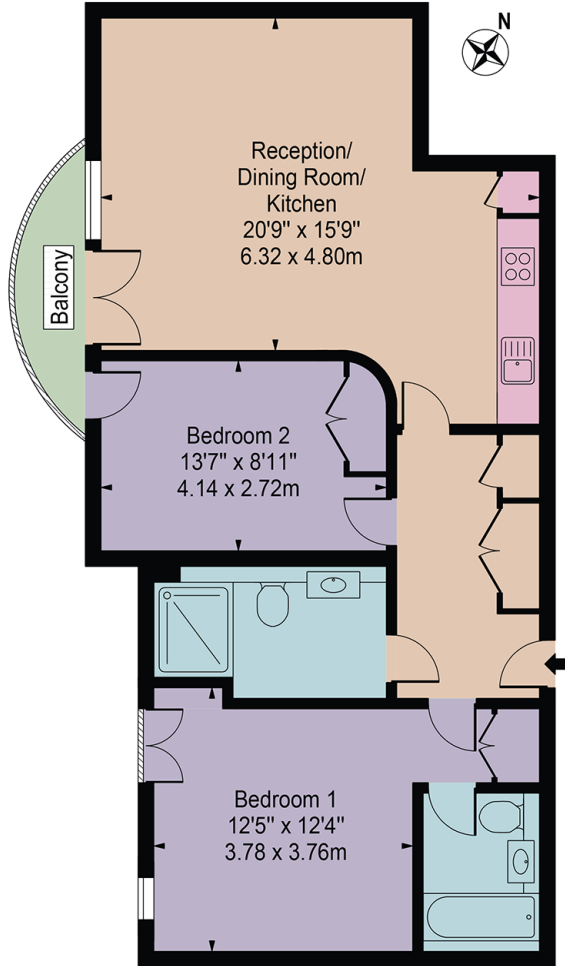


Olivia McSweeney | Head of Lettings  
D: 020 3219 5679 | M: 07584633058 | E: [olivia@rokstone.com](mailto:olivia@rokstone.com)  
5 Dorset Street, London, W1U 6QJ

# ROKSTONE

## Kensington Garden Square

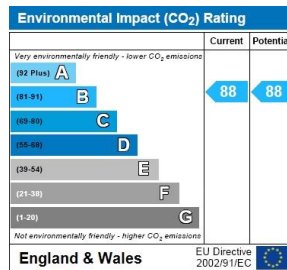
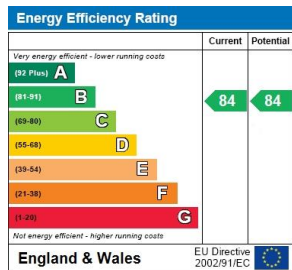
Approx. Gross Internal Area 827 Sq Ft - 76.83 Sq M  
 Approx. External Area Of Balcony 32 Sq Ft - 2.97 Sq M



Fifth Floor

For Illustration Purposes Only - Not To Scale

This floor plan should be used as a general outline for guidance only and does not constitute in whole or in part an offer or contract. Any intending purchaser or lessee should satisfy themselves by inspection, searches, enquiries and full survey as to the correctness of each statement. Any areas, measurements or distances quoted are approximate and should not be used to value a property or be the basis of any sale or let.



Olivia McSweeney | Head of Lettings  
 D: 020 3219 5679 | M: 07584633058 | E: olivia@rokstone.com  
 5 Dorset Street, London, W1U 6QJ