

FLETCHERS

ESTATE AGENTS



Belmont Terrace, W4

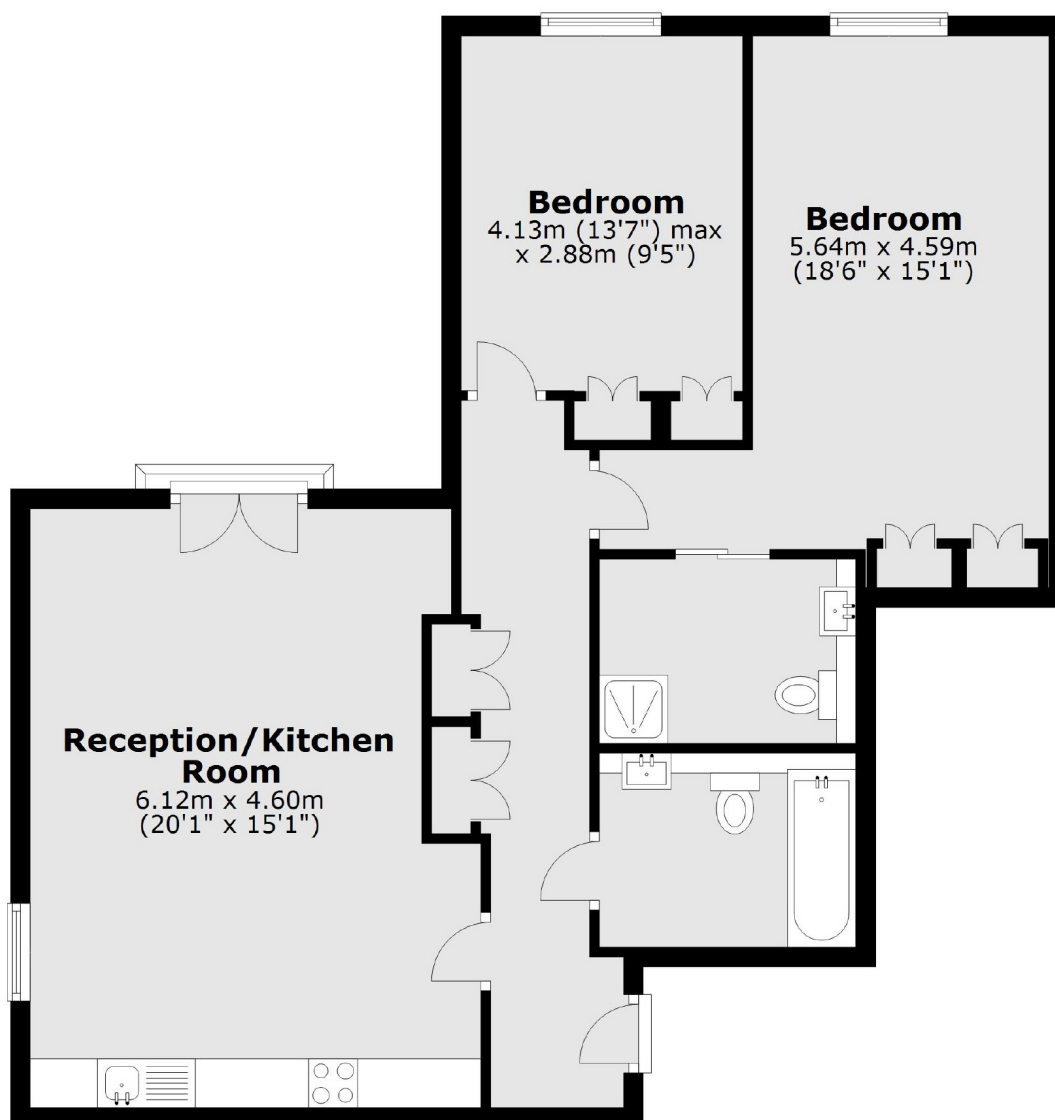
£735,000

A superb two bedroom apartment, on the first floor of a recently built development on the desirable Belmont Terrace. Both bedrooms have built-in storage and accompanied by two modern bathroom suites. Further benefitting from lift access and a share of the freehold.

Belmont Terrace is moments away from the outstanding Belmont School, and a short stroll into Chiswick High Road with a fantastic array of shops, restaurants and cafés. Both Chiswick Park Station and Turnham Green offer Underground links.

- Two Bedrooms • Two Bathrooms • Superb Storage • Juliet Balcony • Lift Access • Share Of Freehold •

Second Floor



Total area: approx. 78.3 sq. metres (842.5 sq. feet)

Fletchers Chiswick Turnham Green Sales
58 Turnham Green Terrace, London, W4 1QP
020 8987 3000
chiswicksales@fletcherestates.com

Energy Rating: C. We aim to make our particulars both accurate and reliable. However they are not guaranteed; nor do they form part of an offer or contract. If you require clarification on any points then please contact us, especially if you're traveling some distance to view. Please note that appliances and heating systems have not been tested and therefore no warranties can be given as to their good working order.