

# Frank Harris & Co.



## Fitzrovia, W1T

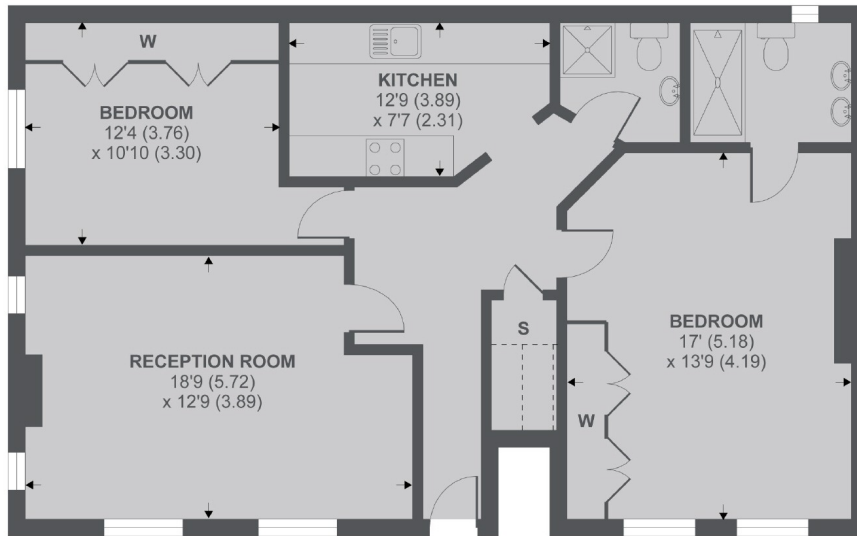
£1,095,000

OFFERS IN EXCESS OF £1,000,000. A well-proportioned two double bedroom apartment in this private terrace mews in the heart of Fitzrovia. The property has a private entrance and offers bright outside space with a communal terrace.

Midford Place is a stones throw away from Goodge Street, Warren Street and Euston Square stations. Moments away lays the varied shopping amenities of Tottenham Court Road and Oxford Street.

# Frank Harris & Co.

Denotes restricted  
head height



1st Floor

## Midford Place, W1T

APPROX FLOOR AREA 953 SQ.FT 88.5 SQ.M (INCLUDES RESTRICTED HEAD HEIGHT)

Copyright nichecom.co.uk 2018 REF : 368524

Frank Harris & Co. Bloomsbury and Kings Cross

81 Marchmont Street,

London, WC1N 1AL

020 7405 4444

[bloomsburysales@frankharris.co.uk](mailto:bloomsburysales@frankharris.co.uk)

Energy Rating: C. We aim to make our particulars both accurate and reliable. However they are not guaranteed; nor do they form part of an offer or contract. If you require clarification on any points then please contact us, especially if you're traveling some distance to view.

Please note that appliances and heating systems have not been tested and therefore no warranties can be given as to their good working order.

