

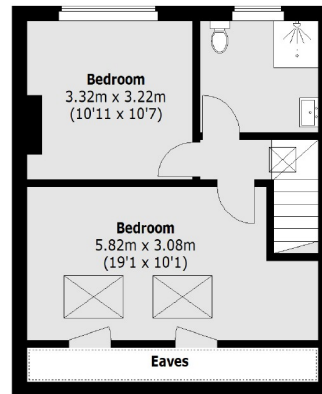


Queensville Road, SW12

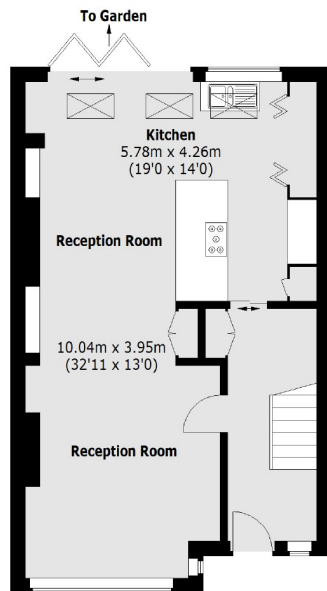
£1,150,000

A superb example of an 1930's family home with a large south west facing garden located on a quiet residential road in Balham.

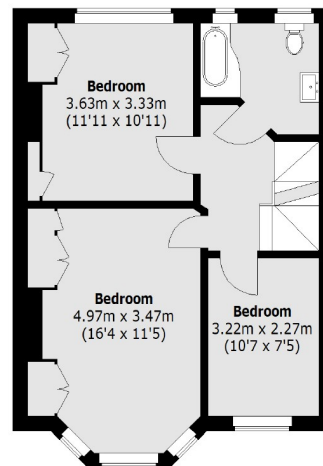
- Family Home
- Five Bedrooms
- Two Bathrooms
- Recently Refurbished
- South West Facing Garden
- Beautifully Presented



Second Floor



Ground Floor



First Floor

Total area (approx.): 144.7 sq. m (1,557.5 sq. ft)
(Excluding Eaves)

Jacksons Balham
8-11 Balham Station Road
London
SW12 9SG
020 8675 6555
balham.sales@jacksonsstateagents.com

Energy Rating: C We aim to make our particulars both accurate and reliable. However they are not guaranteed; nor do they form part of an offer or contract. If you require clarification on any points then please contact us, especially if you're traveling some distance to view. Please note that appliances and heating systems have not been tested and therefore no warranties can be given as to their good working order.