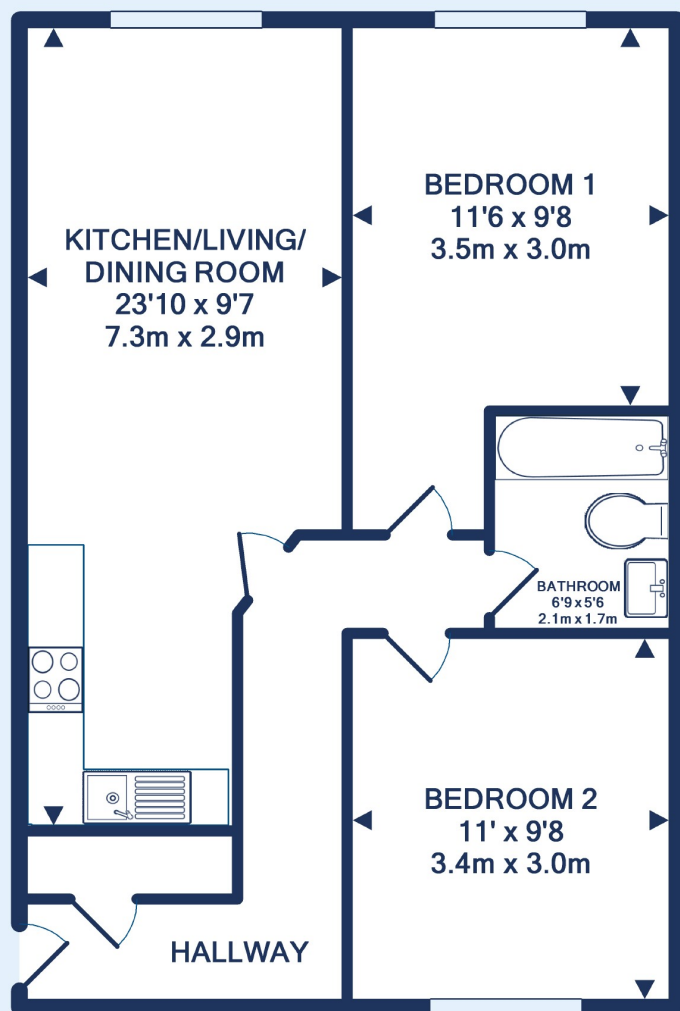


Totterdown - Asking price £240,000

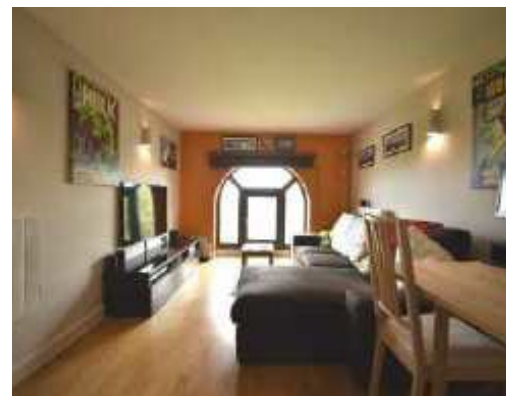
2 bed apartment

Bushy Park, BS4 2AD





Made with Metropix ©2021



This 2 bedroom apartment in "The Bank", part of the redevelopment of the old Lloyd's Bank is available to buy for the first time since 2013!

With views towards the city centre thanks to its position in building and the prominent placement of the building itself, inside the flat and off the central hallway is the living/kitchen/dining space which measures over 7 meters end to end. The kitchen area itself is high spec, high gloss grey, stone worktops and built in appliances. There are also the 2 bedrooms, both doubles, one of which benefits from the view, and the bathroom.

Also in the building, there is a bike store and a communal bin store and separately from the apartments but part of the original redevelopment, Totterdown Gym.

Just a short walk from Temple Meads station - 0.5 miles - Victoria Park - 0.3 miles - and the shops, cafes and pubs of Totterdown, this property will tick a lot of boxes for a first time buyer or prospective landlord!



Knowle Office

321 Wells Road, Knowle, BRISTOL, BS4 2QB

Call: 0117 9773238

Mail: knowlesales@oceanhome.co.uk

Search: oceanhome.co.uk

References to the Tenure of a Property are based on information supplied by the Seller. The Agent has not had sight of the title documents. Lease details, service ground rent (where applicable) are given as a guide only and should be checked and confirmed by your solicitor prior to exchange of contracts.