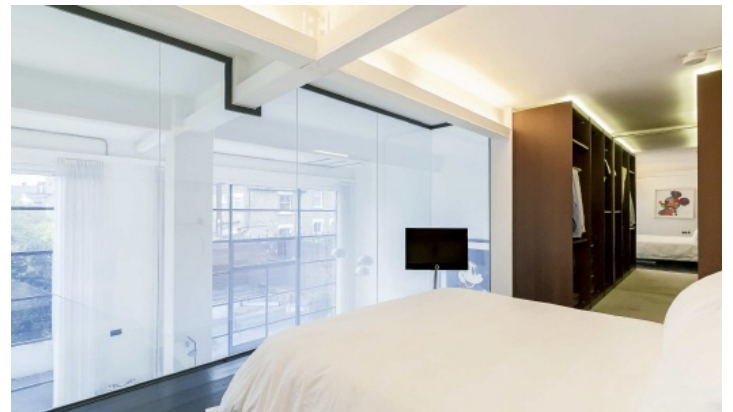


# FLETCHERS

ESTATE AGENTS



## Evershed Walk, W4

£1,650,000

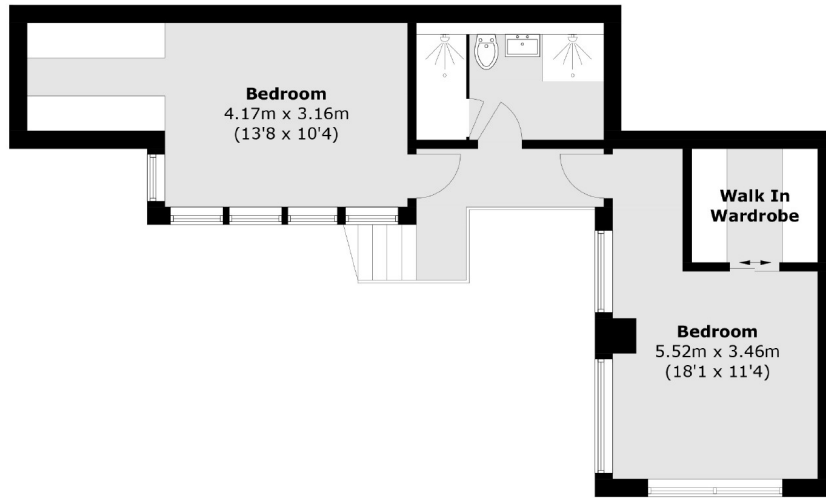
A stunning ground floor two/three bedroom garden apartment in a prestigious gated development with concierge, underground parking, residents gym and a private west-facing garden.

Chiswick Green Studios is a modern development within half a mile from Chiswick Park Station. There are plenty of independent shops, cafés and restaurants nearby at Turnham Green and Chiswick High Road.

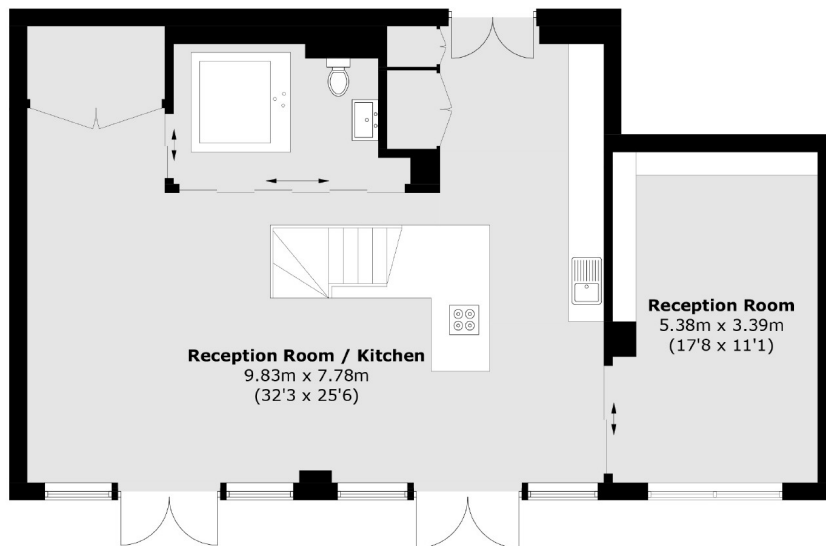
- Three Bedrooms • Two Receptions • Floor/Ceiling Windows • Gated Development • Secure Underground Parking • West-Facing Garden •

# FLETCHERS

ESTATE AGENTS



**First Floor**



**Ground Floor**

Total area (approx.): 148.6 sq. m (1,599.5 sq. ft)

Fletchers Chiswick Turnham Green Sales  
58 Turnham Green Terrace, London, W4 1QP  
020 8987 3000  
chiswicksales@fletcherestates.com

Energy Rating: C. We aim to make our particulars both accurate and reliable. However they are not guaranteed; nor do they form part of an offer or contract. If you require clarification on any points then please contact us, especially if you're traveling some distance to view. Please note that appliances and heating systems have not been tested and therefore no warranties can be given as to their good working order.