

# FLETCHERS

ESTATE AGENTS



## Devonshire Road, W4

£1,000,000

An end of terrace Victorian family home in the popular Glebe estate with three bedrooms, plenty of entertaining space downstairs along with a large galley kitchen. The house has further potential to extend into the loft, and side return.

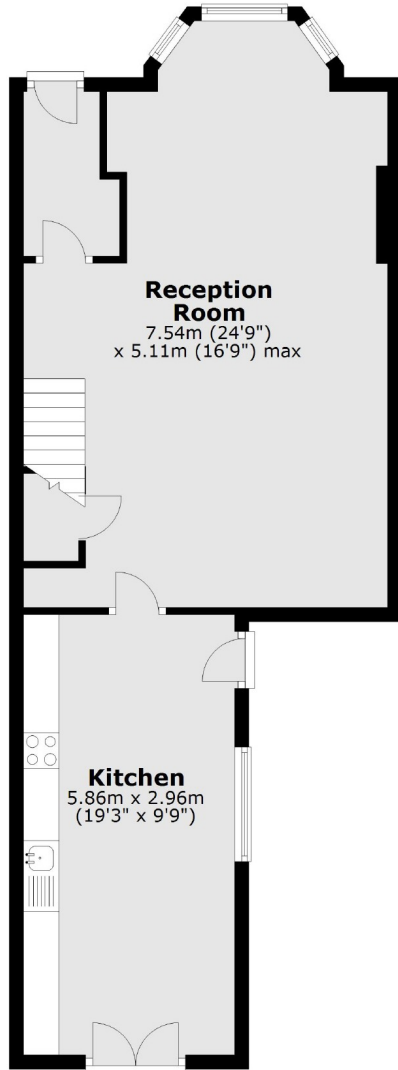
Devonshire Road is a popular street serviced by some fantastic independent shops and cafés, the Chiswick High Road and Turham Green Underground Station. Chiswick House and Grounds, and the Thames are a short walk to the South.

- Three Bedrooms • End of Terrace • Separate Kitchen • Potential to Extend • No Onward Chain • Side Access •

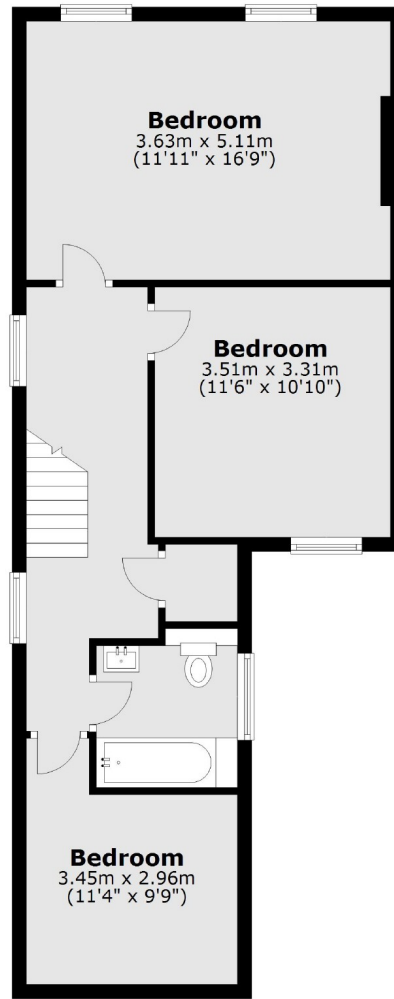
# FLETCHERS

ESTATE AGENTS

## Ground Floor



## First Floor



Total area: approx. 113.3 sq. metres (1219.7 sq. feet)

Fletchers Chiswick Turnham Green Sales  
58 Turnham Green Terrace, London, W4 1QP  
020 8987 3000  
[chiswicksales@fletcherestates.com](mailto:chiswicksales@fletcherestates.com)

Energy Rating: E. We aim to make our particulars both accurate and reliable. However they are not guaranteed; nor do they form part of an offer or contract. If you require clarification on any points then please contact us, especially if you're traveling some distance to view. Please note that appliances and heating systems have not been tested and therefore no warranties can be given as to their good working order.