

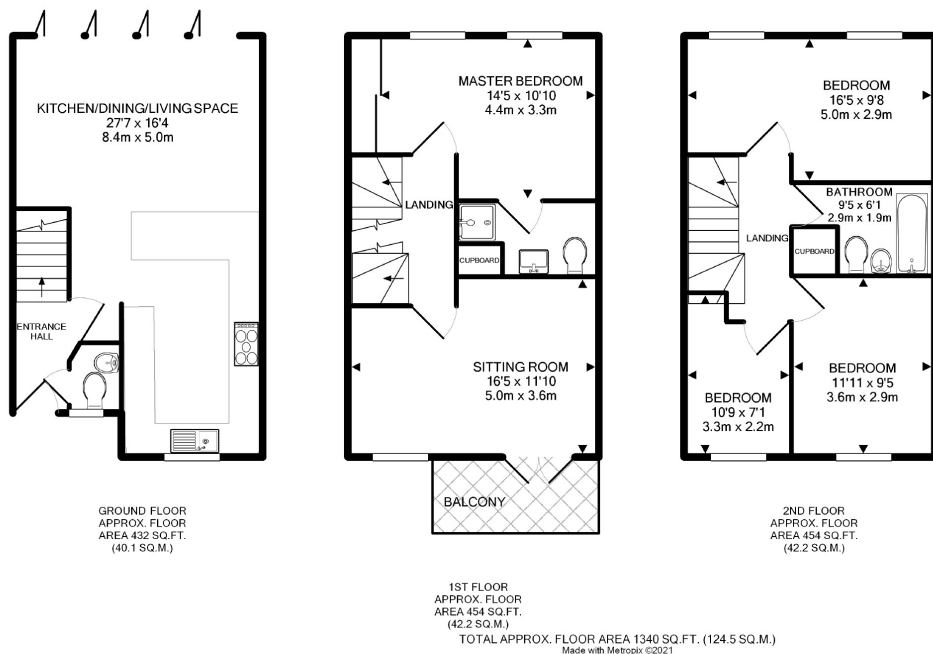


Ashley Down - Guide price £525,000

3 bed house

45 Arthur Milton Street, BS7 9EB





A fantastic family home located on a cul de sac between Ashley Down Road and Brunel Fields primary school. This sought after position is popular due to the highly regarded primary school catchment it falls within, as well as being a short walk to St Andrews Park and the many amenities found on Gloucester Road.

With 124.5 sq. m of flexible accommodation spread over three levels, this property really does offer plenty of space for the new owners to enjoy. Of particular note here is the off street parking and total transformation of the ground floor layout. The integral garage has been converted and opened into the rear of the property. This in turn has created a generous open plan kitchen/dining/living space measuring an impressive 8.4m in length. A 4m wide set of bi folding doors connect the private rear garden (which can be accessed from the road to the rear, and contains bike and garden storage sheds) - extending the already large room. A handy WC is neatly tucked away and accessed from the entrance hallway.

Upstairs the first floor has a full width living room that opens via French doors to a braised terrace - which takes in the southerly facing aspect. Also found on the first floor is a good sized double bedroom with ensuite shower room. Stairs rise to the 2nd floor where there are three further bedrooms and a family bathroom. Access to the loft has been improved providing plenty of boarded floor space - ideal storage.



Bishopston Office

201 Gloucester Road, Bishopston, Bristol,
BS7 8BG

Call: 0117 9425855

Mail: bishopstonsales@oceanhome.co.uk

Search: [oceanhome.co.uk](https://www.oceanhome.co.uk)

References to the Tenure of a Property are based on information supplied by the Seller. The Agent has not had sight of the title documents. Lease details, service ground rent (where applicable) are given as a guide only and should be checked and confirmed by your solicitor prior to exchange of contracts.