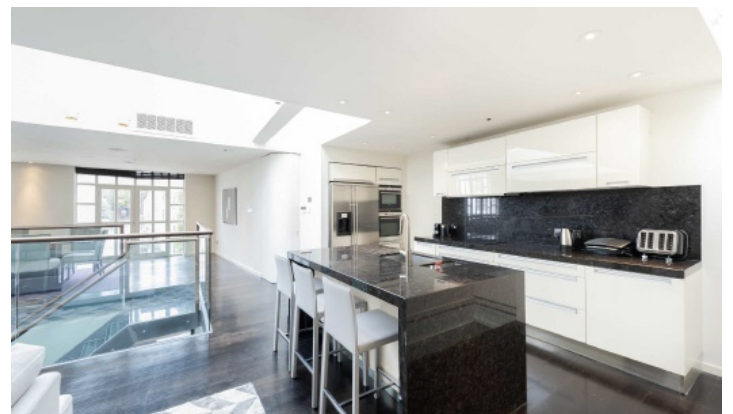


# FLETCHERS

ESTATE AGENTS



## Napier Place, W14

£2,750,000

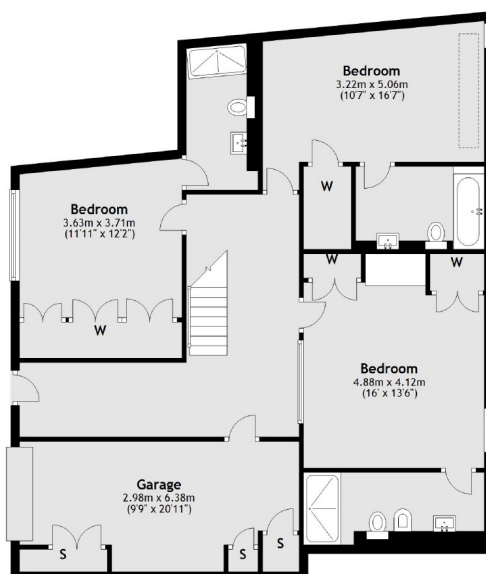
At the head of this secluded and tranquil Mews is a quite magnificent double fronted two storey Mews House, skillfully redesigned to feature exciting open-plan entertaining areas, three calm bedrooms, and a garage/gym.

The Mews is in a prime spot, a ten minute walk from Holland Park and the Design Museum with fashionable High Street Kensington home to retail chains, luxury boutiques, and global restaurants just beyond.

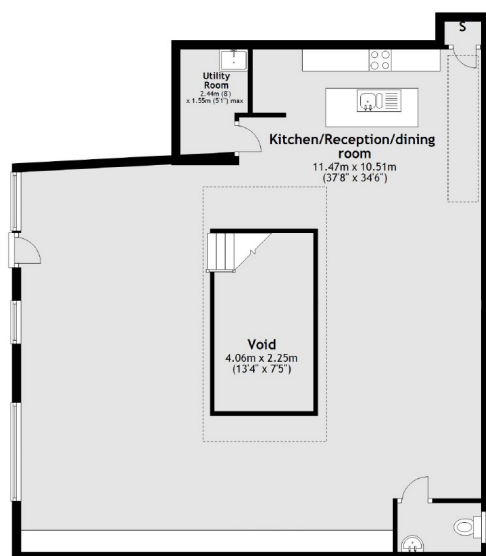
• Open-Plan Reception • Quality Fitted Kitchen • Three Double Bedrooms • Three En Suites • Air Conditioning • Garage/Gym •

# FLETCHERS

## ESTATE AGENTS



Ground Floor



First Floor

Total area: approx. 216.9 sq. metres (2334.7 sq. feet)

Fletchers Brook Green Sales  
142A Shepherds Bush Road, London, W6 7PB  
020 7603 1415  
[brookgreensales@fletcherestates.com](mailto:brookgreensales@fletcherestates.com)

Energy Rating: D. We aim to make our particulars both accurate and reliable. However they are not guaranteed; nor do they form part of an offer or contract. If you require clarification on any points then please contact us, especially if you're traveling some distance to view. Please note that appliances and heating systems have not been tested and therefore no warranties can be given as to their good working order.