

# SNELLERS

ESTATE AGENTS



## Fourth Cross Road, TW2

£675,000

A beautiful period home exuding character, in one of Twickenham's most popular and well known roads. Having undergone careful refurbishment the property has all the period charm a buyer could wish for, along with a contemporary twist. Further benefits include a private garden accessible via a side gate and double doors from the kitchen, offering a superb indoor/outdoor entertaining space.

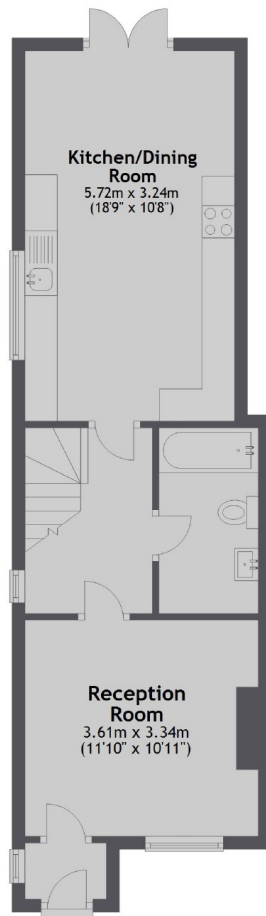
Fourth Cross Road is situated close to Twickenham Green and local shops and amenities. Strawberry Hill and Fulwell stations are just 0.6 miles away and Twickenham Station is only 1.4 miles away, for direct trains into Waterloo.

- Semi Detached • Two Double Bedrooms • Private Garden •
- Fully Refurbished • Popular Road • Potential To Extend (STPP) •

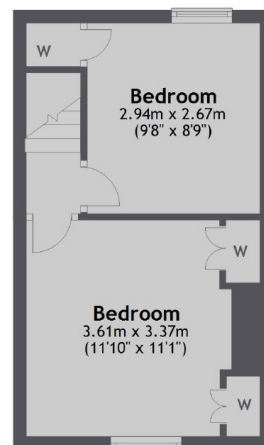
# SNELLERS

ESTATE AGENTS

Ground Floor



First Floor



Total area: approx. 65.6 sq. metres (705.7 sq. feet)

Snellers Twickenham Sales  
64-66 Heath Road  
Twickenham  
TW1 4BX  
020 8892 5555  
[twickenhamsales@snellers.co.uk](mailto:twickenhamsales@snellers.co.uk)

Energy Rating: E We aim to make our particulars both accurate and reliable. However they are not guaranteed; nor do they form part of an offer or contract. If you require clarification on any points then please contact us, especially if you're traveling some distance to view. Please note that appliances and heating systems have not been tested and therefore no warranties can be given as to their good working order