

# Frank Harris & Co.



## Thanet Street, WC1H

£475,000

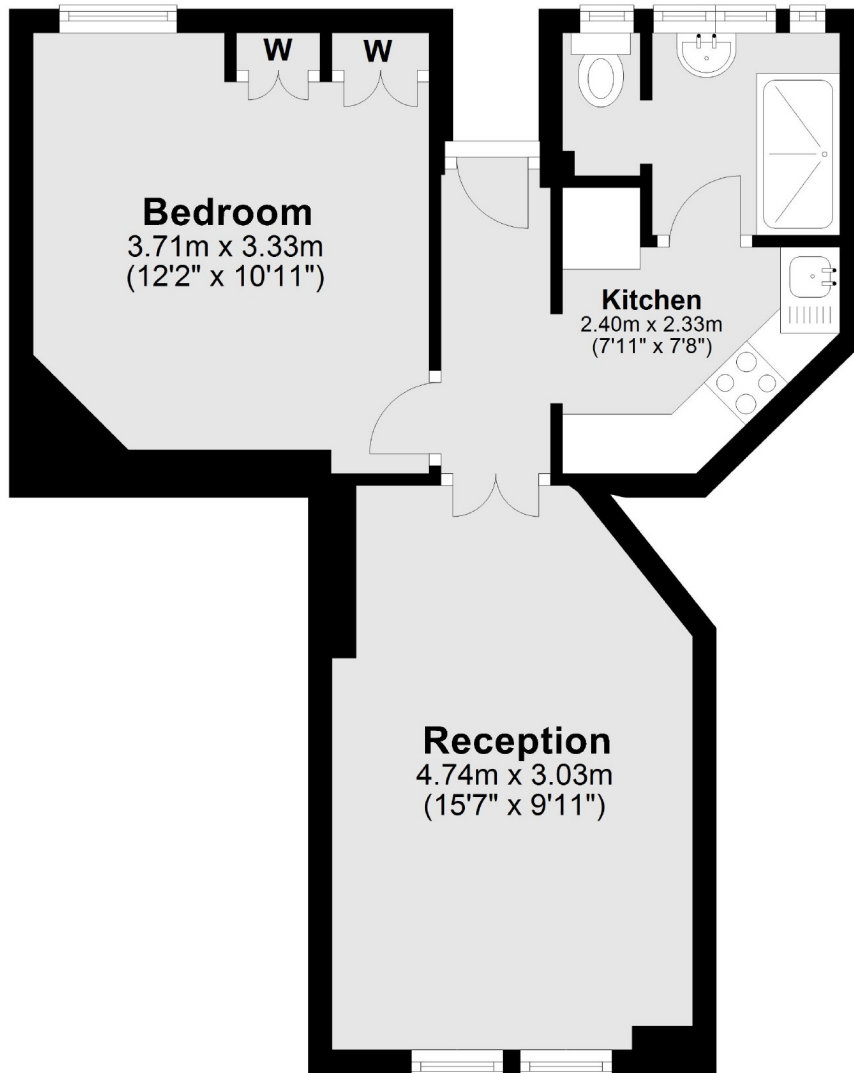
This one bedroom flat is situated on the first floor of this period mansion block. The apartment is offered with no onward chain, caretaker and share of freehold. There is also a communal courtyard to the rear of the building.

Rashleigh House is located on Thanet Street, Kings Cross, St Pancras International, Euston and Euston Square stations are a short walk away.

- First Floor • Period Mansion Block • Central Location •
- Caretaker • Separate Kitchen • No Onward Chain •

# Frank Harris & Co.

## First Floor



Total area: approx. 37.0 sq. metres (398.3 sq. feet)

Frank Harris & Co. Bloomsbury and Kings Cross

81 Marchmont Street,  
London, WC1N 1AL

020 7405 4444  
info@frankharris.co.uk

Energy Rating: D. We aim to make our particulars both accurate and reliable. However they are not guaranteed; nor do they form part of an offer or contract. If you require clarification on any points then please contact us, especially if you're traveling some distance to view. Please note that appliances and heating systems have not been tested and therefore no warranties can be given as to their good working order.