

FLETCHERS

ESTATE AGENTS



Queen Caroline Street, W6

£799,950

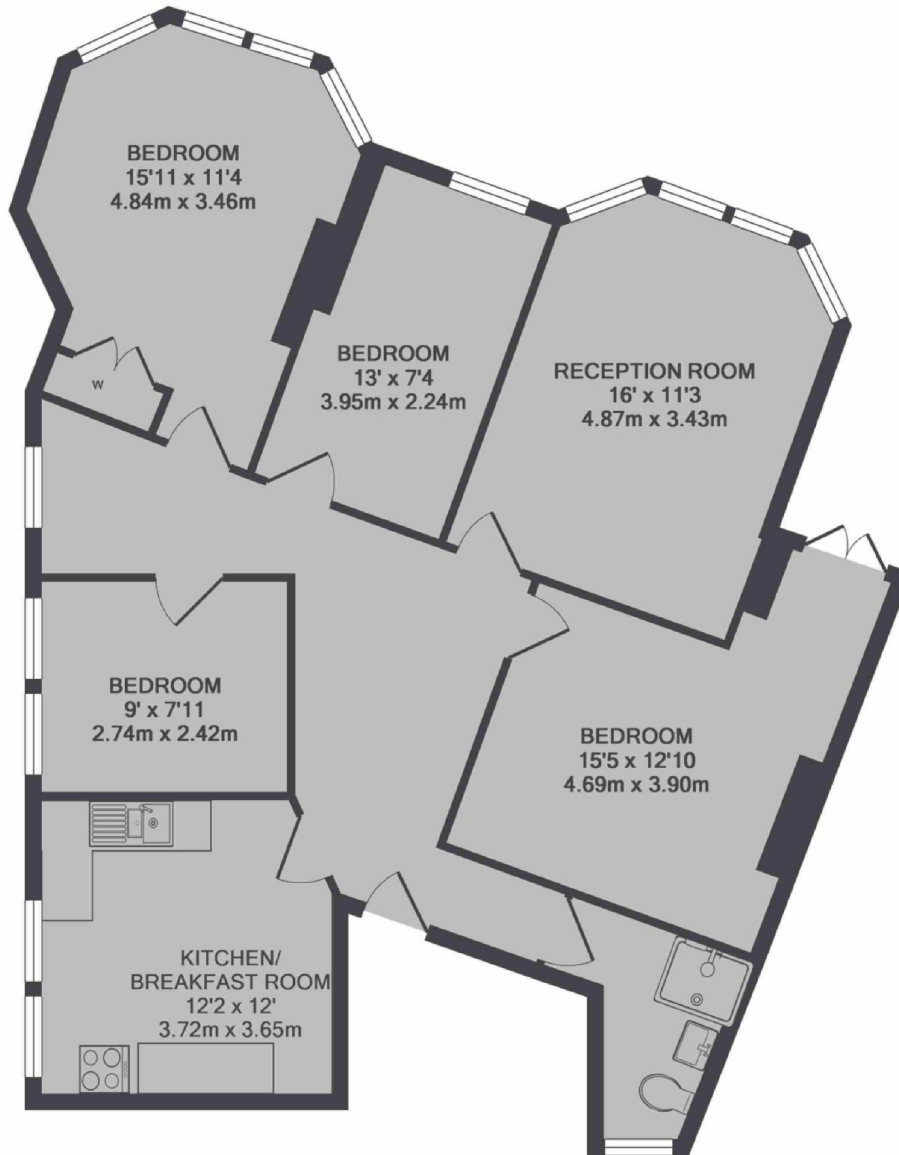
A substantially sized property situated within an attractive Victorian Mansion block in Hammersmith Riverside. The flat is over 1000 sq ft and has four bedrooms, a separate reception and a recently renovated kitchen. It is offered to the market with a long lease and no onward chain.

The property is well located for transport situated less than 0.25 miles from Hammersmith tube station (Piccadilly, District, Hammersmith and City and Circle lines) and bus station offering many great links in and out of town. The flat is also only a street away from the popular riverside studios which offers a cinema, theatre and many cafes and restaurants nearby.

- Period Property • Long Lease • No Onward Chain • Near Thames Path • Close To Transport • Four Bedrooms •

FLETCHERS

ESTATE AGENTS



TOTAL APPROX. FLOOR AREA 1072 SQ.FT. (99.6 SQ.M.)

Fletchers Chiswick Turnham Green Sales
58 Turnham Green Terrace, London, W4 1QP
020 8987 3000
chiswicksales@fletcherestates.com

Energy Rating: C. We aim to make our particulars both accurate and reliable. However they are not guaranteed; nor do they form part of an offer or contract. If you require clarification on any points then please contact us, especially if you're traveling some distance to view. Please note that appliances and heating systems have not been tested and therefore no warranties can be given as to their good working order.