

FLETCHERS

ESTATE AGENTS



Esmond Road, W4

£461 Per week (£2,000 pcm)

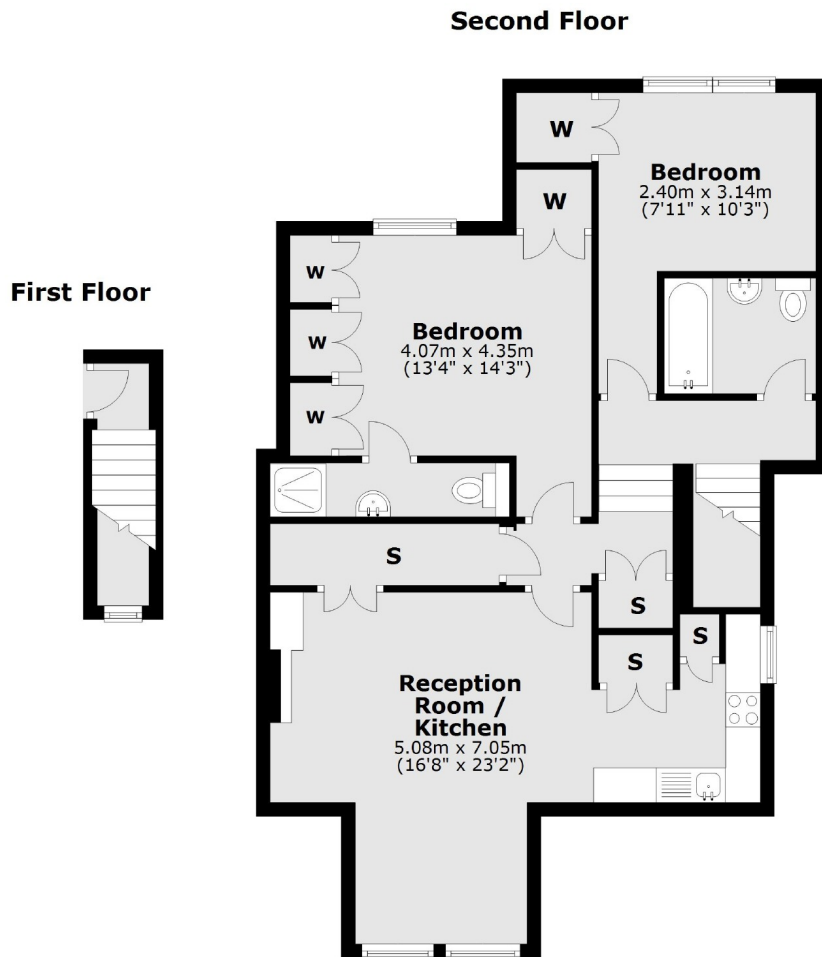
This impressive two bedroom, two bathroom apartment is on one of the most popular roads in Chiswick. The property has a large open-plan reception room, loft storage, and benefits from a modern finish with original features.

Situated in this popular tree lined residential road in the desirable Bedford Park area, just 400 metres from Turnham Green Tube Station and providing easy access in and out of London via the A4.

- Split-Level
- Two Bedrooms
- Two Bathrooms
- Bedford Park
- Modern Finish
- Open-Plan Reception

FLETCHERS

ESTATE AGENTS



Total area: approx. 76.1 sq. metres (819.4 sq. feet)

Fletchers Chiswick High Road Lettings
86 Chiswick High Road, Chiswick, London, W4 1SY
020 8742 4100
chiswicklettings@fletcherstates.com

Energy Rating: C. We aim to make our particulars both accurate and reliable. However they are not guaranteed; nor do they form part of an offer or contract. If you require clarification on any points then please contact us, especially if you're traveling some distance to view. Please note that appliances and heating systems have not been tested and therefore no warranties can be given as to their good working order.