

FLETCHERS

ESTATE AGENTS



Sutton Lane North, W4

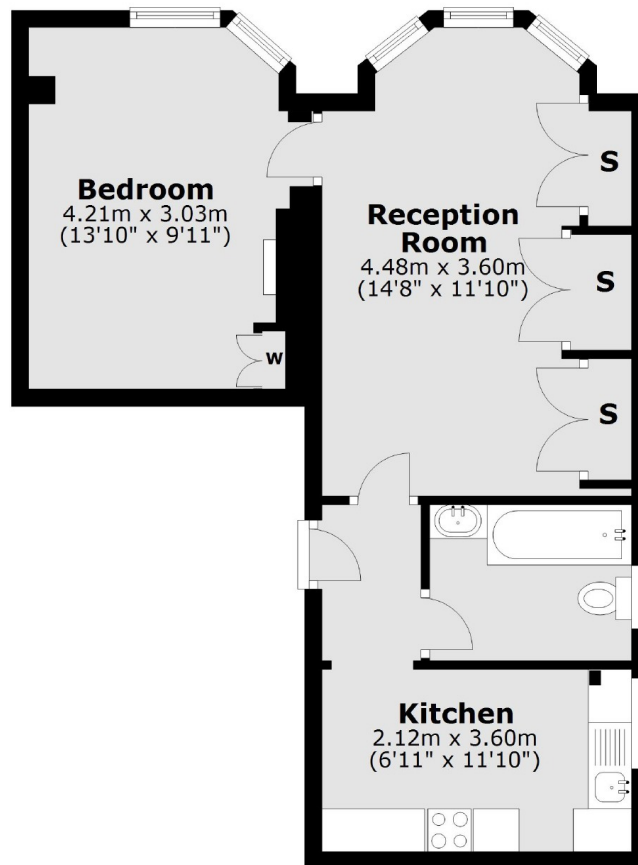
£288 Per week (£1,250 pcm)

A one double bedroom flat in a well maintained mansion development, off the Chiswick High Road with superb views over the green. The property offers a good size reception room, a separate kitchen and a bathroom with shower over bath.

The property is less than half a mile to Chiswick Park Underground and all the wonderful shops and boutiques the high road has to offer.

- One Bedroom • Ample Storage • Central Location • Separate Kitchen • Period Features • Mansion Block •

First Floor



Total area: approx. 46.6 sq. metres (501.9 sq. feet)

Fletchers Chiswick High Road Lettings
86 Chiswick High Road, Chiswick, London, W4 1SY
020 8742 4100
chiswicklettings@fletcherstates.com

Energy Rating: . We aim to make our particulars both accurate and reliable. However they are not guaranteed; nor do they form part of an offer or contract. If you require clarification on any points then please contact us, especially if you're traveling some distance to view. Please note that appliances and heating systems have not been tested and therefore no warranties can be given as to their good working order.