



RESIDENTIAL

SALES | LETTINGS | PROPERTY MANAGEMENT

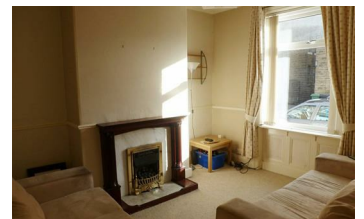


10 Lipscombe Street, HD3 4PF Offers In The Region Of £72,950



UO * ATTENTION NEW PRICE* ADM Residential offer for sale this three bedroom, stone built mid terrace. Located in the village of Milnsbridge. Close to all amenities, school and easy access to the Huddersfield Town Centre. The property boasts, gas fire central heating system and uPVC double glazed windows. The property briefly comprises of entrance, spacious lounge, kitchen and dining room and a useful cellar. To the first floor, three good sized bedrooms and house bathroom. Exterior: Concrete and stone flagged garden to rear elevation, on street parking to front. NO CHAIN. This property would be perfect for a family or first time buyers. Call ADM Residential today to arrange a viewing.

- Stone Built Mid Terrace
- Lounge, Kitchen & Dining Room
- Gas Central Heating
- No Chain
- Three Bedrooms
- Cellar
- Double Glazed



55 Market Street, Milnsbridge, Huddersfield, HD3 4HZ
T: 01484 644555 | E: sales@admresidential.co.uk
www.admresidential.co.uk

