



RESIDENTIAL

SALES | LETTINGS | PROPERTY MANAGEMENT



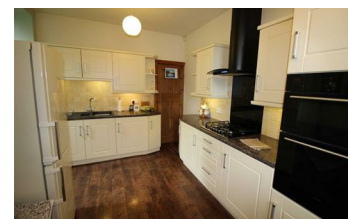
28 Hazel Grove, Linthwaite, Huddersfield, HD7 5TQ

Realistic Offers Considered £242,000



SOLD IN ONE WORD *STUNNING* High Spec, Great Location, Beautiful Gardens, Offered for sale is this spectacular, deceptively spacious, "Extended" THREE detached true bungalow. Truly a credit to the current owners, being ideally positioned within the popular locality of Linthwaite, close to all local amenities, bus routes and local schools with easy access to the motorway networks. The property benefits from uPVC double glazed windows and gas central heating and quality fixtures and fittings. Comprises of:- Reception hallway, spacious lounge, dining kitchen, second reception room, utility room, three double bedroom and a house bathroom. Externally the property boasts well maintained and landscaped gardens to front, amply off road parking for a 5/6 vehicles leading to a detached garage. The gardens extend into the rear of the property which again are predominantly lawned with superb far reaching views. To truly appreciate the quality of the interior and location a viewing is highly recommended, Please contact the agent today. NOT TO BE MISSED

- True Detached Bungalow
- Lounge & Dining Kitchen
- Outstanding Views
- Gardens to front and Rear
- Three Double Bedrooms
- Extended To The Rear
- Beautifully Presented
- Large Driveway and Garage



55 Market Street, Milnsbridge, Huddersfield, HD3 4HZ
T: 01484 644555 | E: sales@admresidential.co.uk
www.admresidential.co.uk

