



Molyneux Drive, SW17

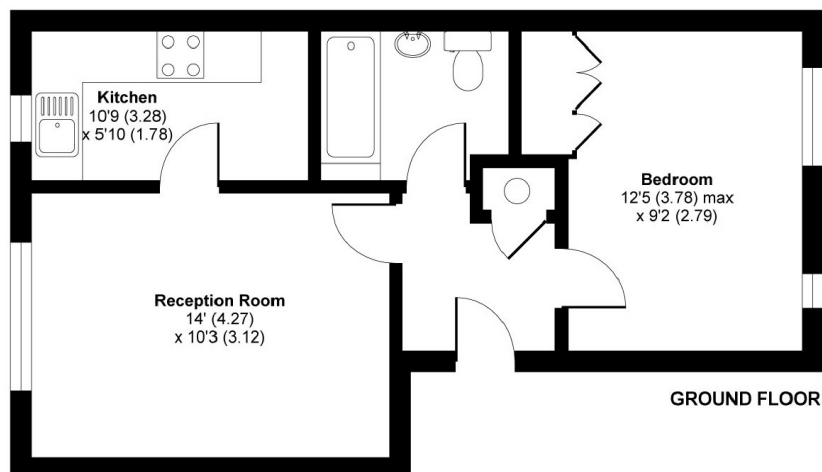
£1,275 PCM

A ground floor one bedroom modern apartment located in the popular heritage Park development. This property would be suitable for a professional couple or single occupant.

- Modern Apartment
- One Bedroom
- Modern Fitted Kitchen
- Luxury Bathroom
- Close to Station
- Off Street Parking

For further information on the costs associated with renting a property, please pop into our office or visit our website.

Molyneux Drive is located within a short distance of Tooting Bec northern line station, Tooting Common and the many bars, shops and restaurants Tooting has to offer.



APPROX. GROSS INTERNAL FLOOR AREA 435 SQ FT 40.4 SQ METRES

Molyneux Drive, London, SW17

Copyright nichecom.co.uk 2015 Produced for Jacksons the Independent Estate Agents REF : 44067

Jacksons Tooting
26 Tooting Bec Road
London
SW17 8BD
020 8767 0522
tooting.lettings@jacksonsestateagents.com

Energy Rating: D We aim to make our particulars both accurate and reliable. However they are not guaranteed; nor do they form part of an offer or contract. If you require clarification on any points then please contact us, especially if you're traveling some distance to view. Please note that appliances and heating systems have not been tested and therefore no warranties can be given as to their good working order.